

SONY

make.believe

Working Instructions

- mechanical -



Xperia™ neo L

MT25i

CONTENTS

| | | |
|----------|---|-----------|
| 1 | Exterior Views..... | 4 |
| 1.1 | MT25i..... | 4 |
| 2 | Tools | 5 |
| 3 | Disassembly..... | 6 |
| 3.1 | Battery Cover..... | 6 |
| 3.2 | Battery..... | 6 |
| 3.3 | Rear Cover Assembly | 7 |
| 3.4 | Sub SIM PBA Assy | 9 |
| 3.5 | Front Cover Assy | 9 |
| 3.6 | Cushion LCD Shim Black | 12 |
| 3.7 | Display | 13 |
| 3.8 | Main PBA and LCD Frame | 14 |
| 4 | Replacement | 17 |
| 4.1 | Battery Cover..... | 17 |
| 4.2 | Rear Cover Assembly | 17 |
| 4.3 | Sub SIM PBA Assy | 17 |
| 4.4 | Front Cover Assy | 17 |
| 4.5 | Cushion LCD Shim Black | 18 |
| 4.6 | Display | 18 |
| 4.7 | LCD Frame..... | 18 |
| 4.8 | Antenna holder | 19 |
| 4.9 | Camera Conductive Adhesive | 21 |
| 4.10 | Core Unit Label..... | 23 |
| 4.11 | Dome Sheet | 25 |
| 4.12 | Function Key | 26 |
| 4.13 | Gasket LCM Connector..... | 28 |
| 4.14 | Gasket PBA | 29 |
| 4.15 | Gasket Receiver Connector..... | 30 |
| 4.16 | Gasket TP Connector | 31 |
| 4.17 | Kapton LCM FPC..... | 32 |
| 4.18 | LED indicator & LED indicator adhesive | 33 |
| 4.19 | Loudspeaker & Gasket Speaker..... | 36 |
| 4.20 | Main Camera..... | 38 |
| 4.21 | Mesh Speaker | 40 |
| 4.22 | PBA Receiver Flex & Mylar Tape Receiver & Receiver Adhesive ... | 41 |
| 4.23 | Receiver Mesh | 45 |
| 4.24 | Rubber Microphone | 46 |
| 4.25 | Shield can BB | 48 |
| 4.26 | Shield can PA | 49 |

| | | |
|--------|--|----|
| 4.27 | Shield can RF | 50 |
| 4.28 | Side Key | 51 |
| 4.29 | Tape RF Hole | 52 |
| 4.30 | Touch Panel Conductive Adhesive | 53 |
| 4.31 | Water Indicator | 55 |
| 4.32 | Board Swap | 57 |
| 4.32.1 | Board Swap- Replacement | 57 |
| 4.32.2 | Board Swap – Change Label | 57 |
| 4.32.3 | Board Swap – Customize of Software | 57 |
| 5 | Reassembly..... | 58 |
| 5.1 | Main PBA & LCD Frame | 58 |
| 5.2 | Display | 62 |
| 5.3 | Cushion LCD Shim Black | 64 |
| 5.4 | Front Cover Assy | 66 |
| 5.5 | Sub SIM PBA Assy | 68 |
| 5.6 | Rear Cover Assembly | 68 |
| 5.7 | Battery..... | 70 |
| 5.8 | Battery Cover..... | 70 |
| 6 | Revision History | 71 |

**For general information about mechanical repair related issues, refer to
1220-1333: Generic Repair Manual - mechanical**

1 Exterior Views

1.1 MT25i



2 Tools

SPECIAL TOOLS

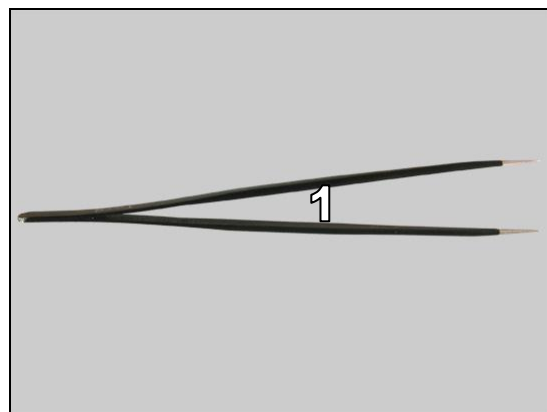
1. Guitar Pick
2. Flex Film Assembly Tool
3. Front Opening Tool
4. Torque Screwdriver
5. Bits(JCIS No 0)
6. Bits(T5)



For part no's on the tools above, refer to the 'Tools Catalogue/Matrix'!

STANDARD TOOLS

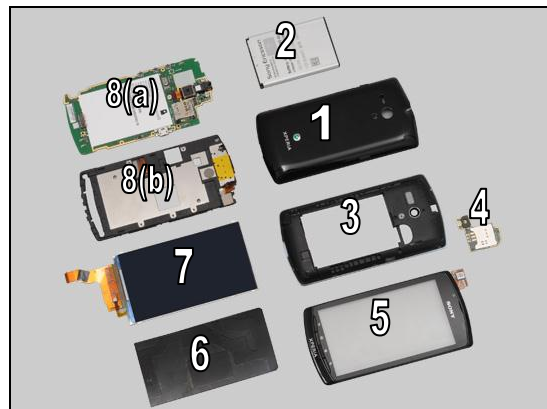
1. Tweezers



3 Disassembly

The disassembly is done in the following order:

1. Battery Cover
2. Battery
3. Rear Cover Assembly
4. Sub SIM PBA Assy
5. Front Cover Assy
6. Cushion LCD Shim Black
7. Display
8. Main PBA (a) & LCD Frame (b)



3.1 Battery Cover

Release the Battery Cover from the cavity at bottom side by fingers.



Lift up the Battery Cover and remove it.



3.2 Battery

Use finger to release the Battery as shown.



Disassembly

Lift to remove the Battery.



3.3 Rear Cover Assembly

Remove the four Screw_M1.6X4.2 by using a screwdriver with Bits (T5).



Remove the six Screw_M1.4X2.8 by using a screwdriver with Bits (JCIS No 0).



Remove the two Screw_M1.4X2.4 by using a screwdriver with Bits (JCIS No 0).



Disassembly

Insert a Guitar Pick and slide along to release the right side.

Do not touch the Spring Pins under the Rear Cover as shown in the picture!



Slide it along to release the bottom side.



Insert a Guitar Pick and slide along to release the left side.

Do not touch the Spring Pins under the Rear Cover as shown in the picture!



Lift up the Rear Cover Assembly and push to release the hooks at the top side gently as shown.

Note the Audio Jack in the middle of the top side as shown in the picture!



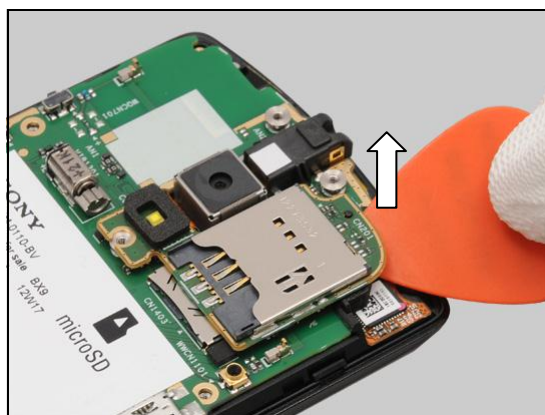
Disassembly

Separate the Rear Cover Assembly and the Unit.



3.4 Sub SIM PBA Assy

Insert the Guitar Pick underneath the Sub SIM PBA Assy and pull upwards gently to unsnap the BtB connector.



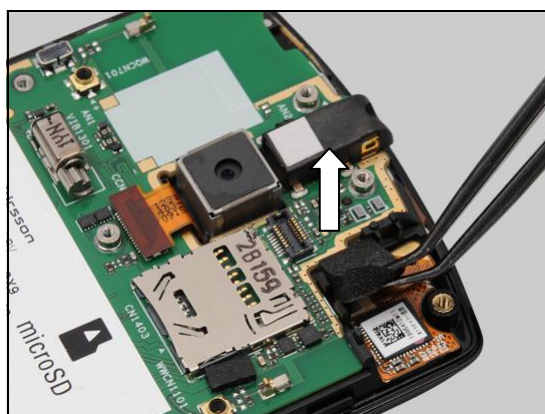
Remove the Sub SIM PBA Assy.



3.5 Front Cover Assy

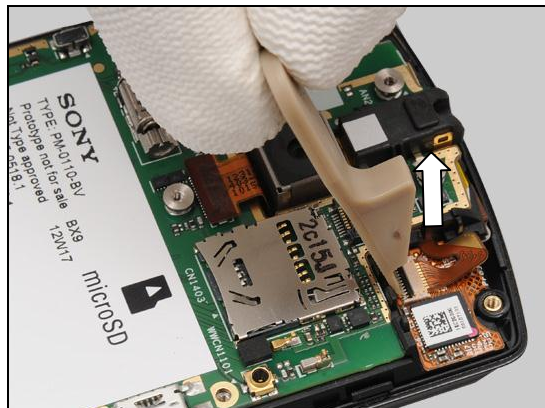
Detach to remove the Gasket TP Connector.

Scrap! Not to be reused!

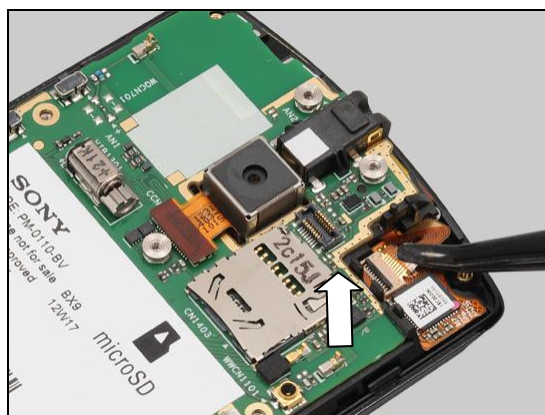


Disassembly

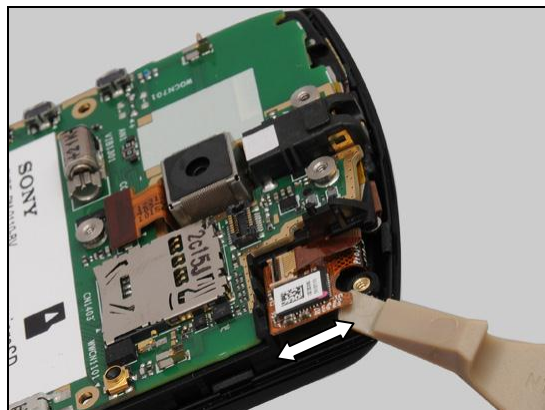
Unlock the ZIF connector by using a Front Opening Tool.



Release the flex part from the ZIF connector.



Detach the FPC from up right corner and slide along the edge to release the FPC adhesive.



There are seven hooks securing the Front Cover Assy.



Disassembly

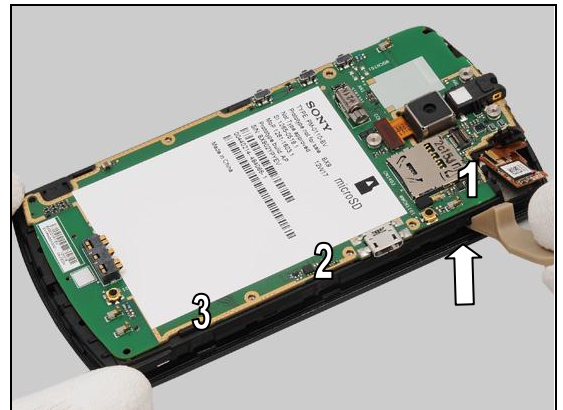
Insert the Front Opening Tool to release the three hooks of Front Cover Assy from the left side.



Release the bottom side of Front Cover Assy as shown.



Insert the Front Opening Tool to release the Front Cover Assy from top of right side.



Separate the Front Cover Assy and left Unit.



Disassembly

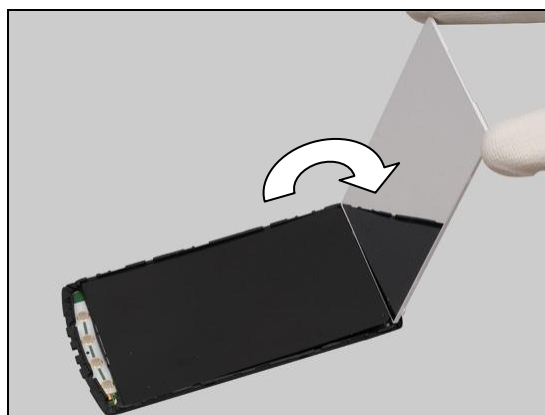
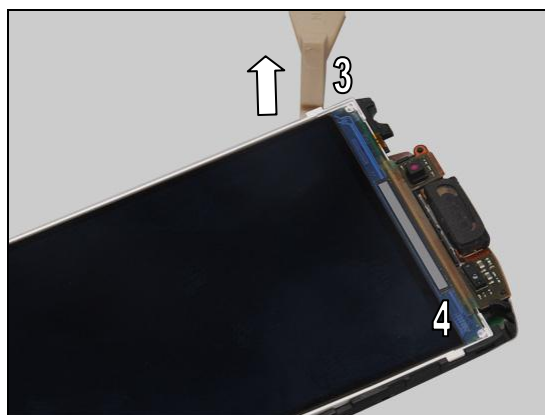
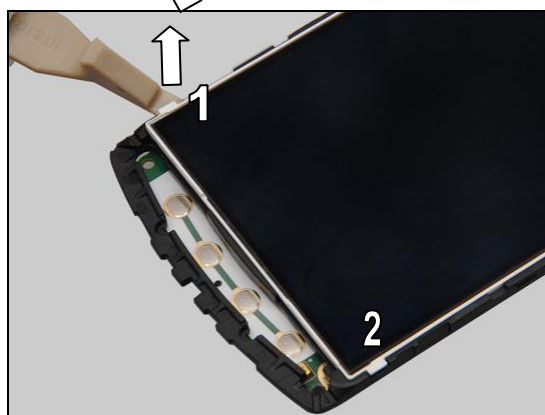
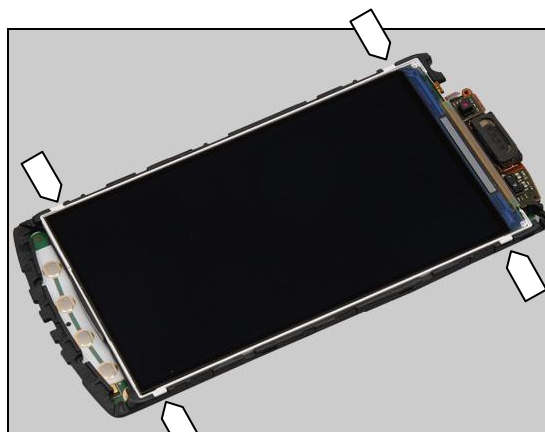
3.6 Cushion LCD Shim Black

Turn over the unit, there are four hooks securing the Display.

Unsnap the hooks of Display at the bottom side as the order shown in the picture.

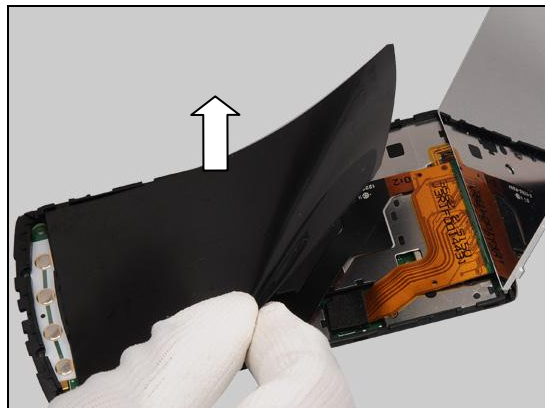
Do the same for the other two hooks.

Turn the Display to about 90 degrees.



Disassembly

Lift up to release the adhesive under the Cushion LCD Shim Black and remove the Cushion LCD Shim Black.

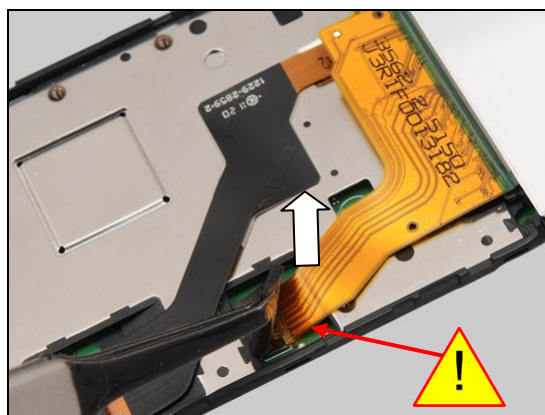


3.7 Display

Detach the Gasket LCM Connector by using a Flex Film Assembly Tool.

Note: Take care of the ZIF connector under the Kapton LCM FPC.

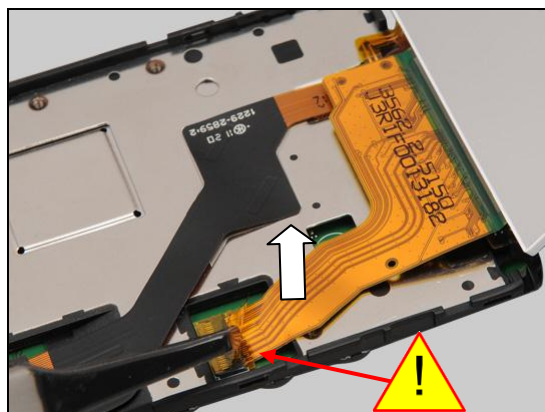
Scrap! Not to be reused!



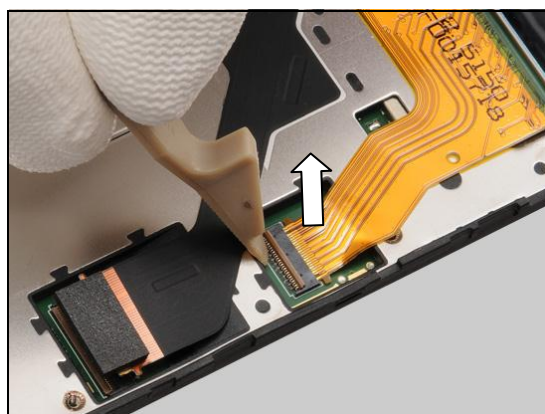
Detach the Kapton LCM FPC by using a Flex Film Assembly Tool.

Note: Take care of the ZIF connector under the Kapton LCM FPC.

Scrap! Not to be reused!

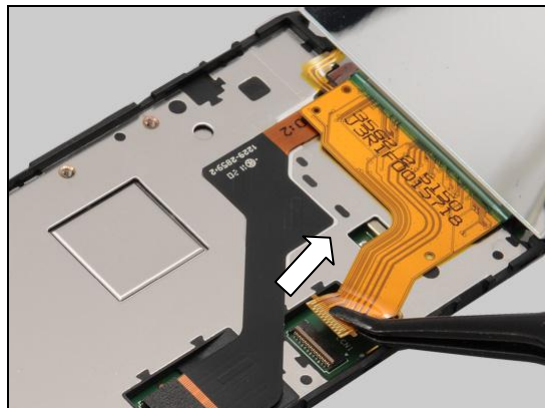


Unlock the ZIF connector by using a Front Opening Tool.

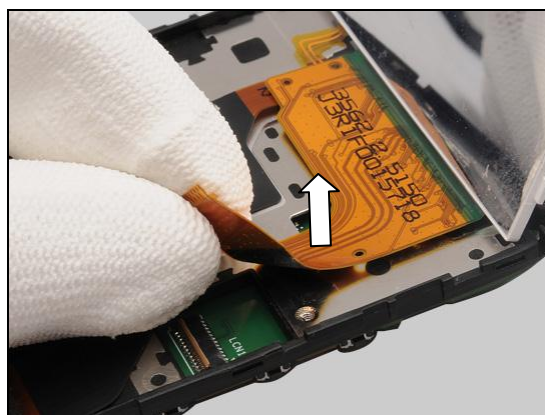


Disassembly

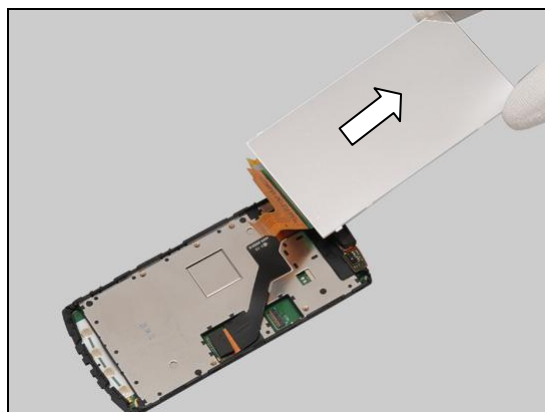
Release the flex part from the ZIF connector.



Detach to release the adhesive under the FPC.



Separate the Display.

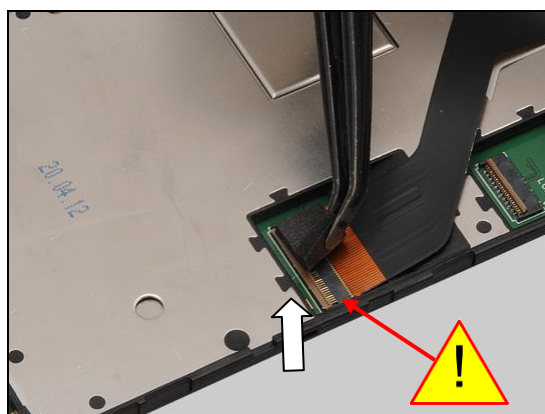


3.8 Main PBA and LCD Frame

Detach the Gasket Receiver Connector.

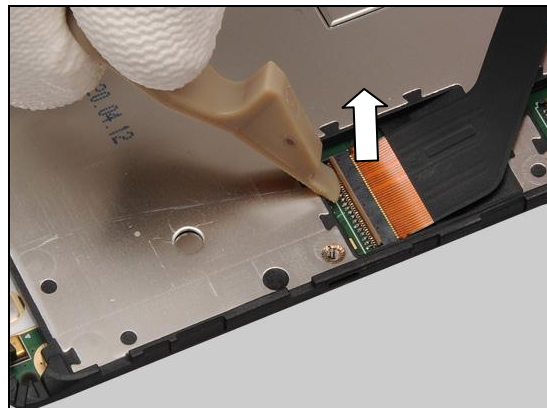
Note: Take care of the ZIF connector under the Gasket Receiver Connector.

Scrap! Not to be reused!

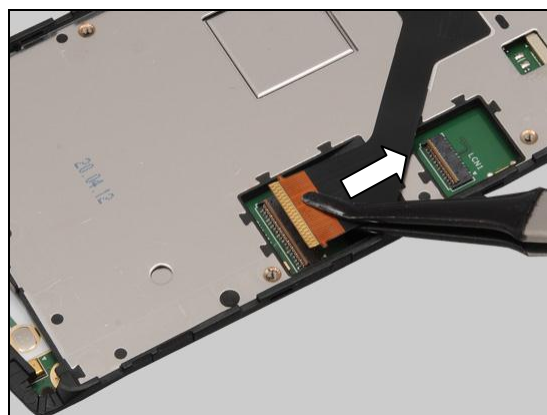


Disassembly

Unlock the ZIF connector by using a Front Opening Tool.



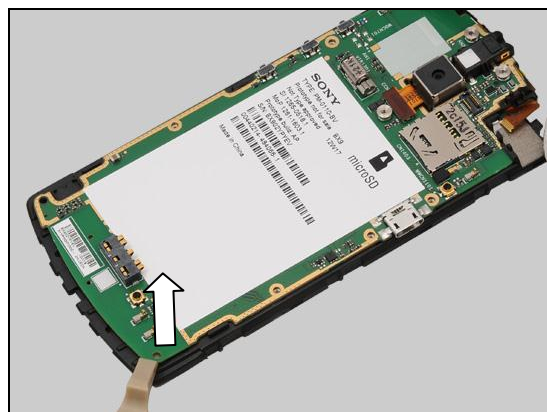
Release the flex part from the ZIF connector.



Turn over the unit and there are three hooks securing the PBA.



Insert the Front Opening tool from bottom of right side and lift up to unsnap the hook.



Disassembly

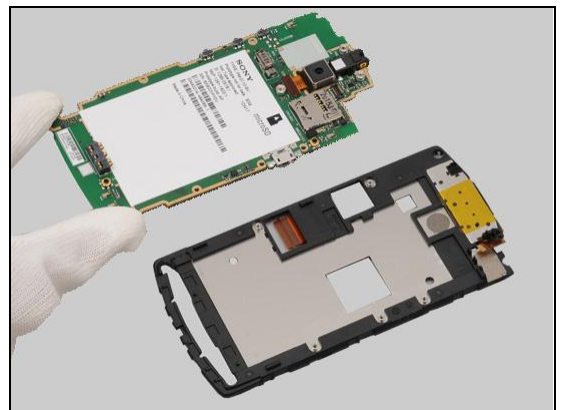
Do the same for the hook on the opposite side.



Turn the Main PBA to the right side to release the other hook on the left top corner.



Separate them.



4 Replacement

4.1 Battery Cover

Follow the 3.1 Disassembly instructions!

Prepare the new Battery Cover.

Follow the 5.8 Reassembly instructions!



4.2 Rear Cover Assembly

Follow the 3.1 – 3.3 Disassembly instructions!

Follow the 4.8, 4.19, 4.24, 4.29 Removal instructions!

Prepare the new Rear Cover Assembly.

Follow the 4.8, 4.19, 4.24, 4.29 Installation instructions!

Follow the 5.6 – 5.8 Reassembly instructions!

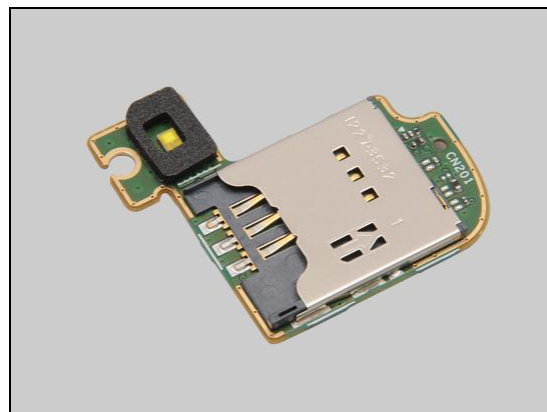


4.3 Sub SIM PBA Assy

Follow the 3.1 – 3.4 Disassembly instructions!

Prepare the new Sub SIM PBA Assy.

Follow the 5.5 – 5.8 Reassembly instructions!



4.4 Front Cover Assy

Follow the 3.1 – 3.5 Disassembly instructions!

Follow the 4.12 Removal instructions!

Prepare the new Front Cover Assy.

Follow the 4.12 Installation instructions!

Follow the 5.4 – 5.8 Reassembly instructions!



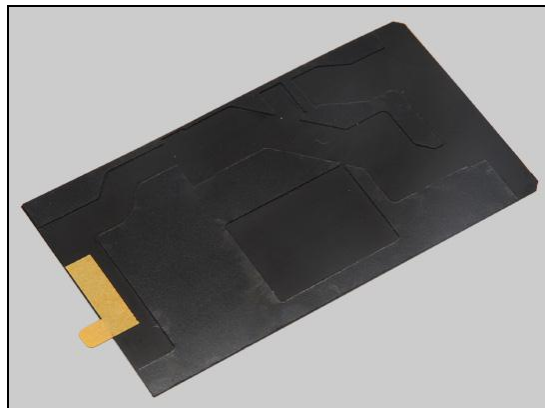
Replacement

4.5 Cushion LCD Shim Black

Follow the 3.1 – 3.6 Disassembly instructions!

Prepare the new Cushion LCD Shim Black.

Follow the 5.3 – 5.8 Reassembly instructions!

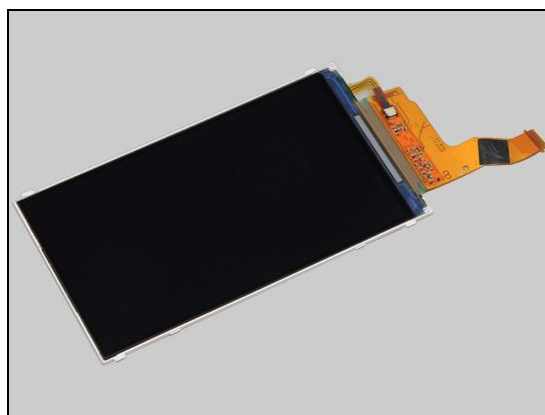


4.6 Display

Follow the 3.1 – 3.7 Disassembly instructions!

Prepare the new Display.

Follow the 5.2 – 5.8 Reassembly instructions!



4.7 LCD Frame

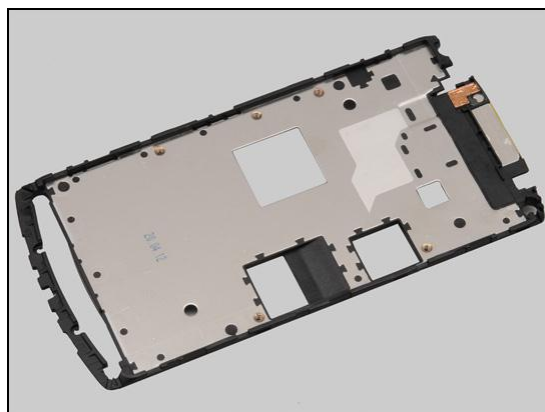
Follow the 3.1 – 3.8 Disassembly instructions!

Follow the 4.22 Removal instructions!

Prepare the new LCD Frame.

Follow the 4.9, 4.22, 4.30 Installation instructions!

Follow the 5.1 – 5.8 Reassembly instructions!



Replacement

4.8 Antenna holder

Follow the 3.1 – 3.2 Disassembly instructions!

Carry out the removal as described below.

Prepare the new Antenna holder.

Carry out the Installation as described below.

Follow the 5.7 – 5.8 Reassembly instructions!

REMOVAL

Remove the two Screw_M1.6X4.2 by using a screwdriver with Bits (T5).

Insert Guitar Pick to unsnap the bottom side.

Insert Guitar Pick to lift up the right side.



Replacement: Antenna holder

Remove the Antenna holder.



INSTALLATION

Place the Antenna holder in the correct position.



Press to secure its position.



Apply 9 ± 0.9 Ncm torque when tightening the two Screw_M1.6X4.2 with Bits (T5).



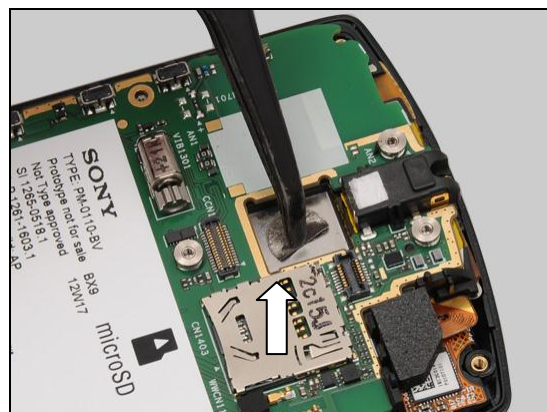
Replacement

4.9 Camera Conductive Adhesive

Follow the 3.1 – 3.4 Disassembly instructions!
Follow the 4.20 Removal instructions!
 Carry out the removal as described below.
 Prepare the new Camera Conductive Adhesive.
 Carry out the Installation as described below.
Follow the 4.20 Installation instructions!
Follow the 5.5 – 5.8 Reassembly instructions!

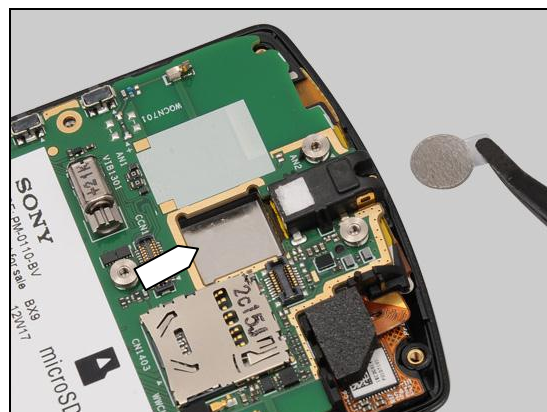
REMOVAL

Detach Camera Conductive Adhesive by using a Flex Film Assembly Tool.

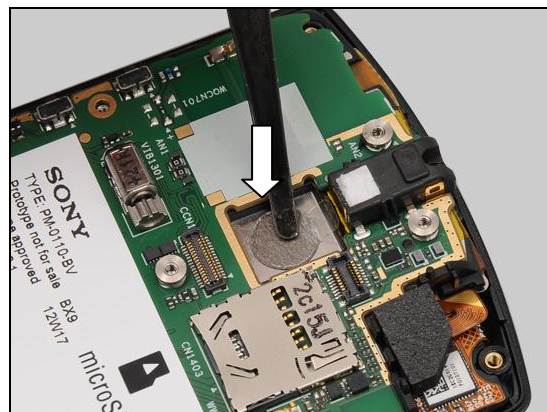


INSTALLATION

Place the new Camera Conductive Adhesive in the correct position.

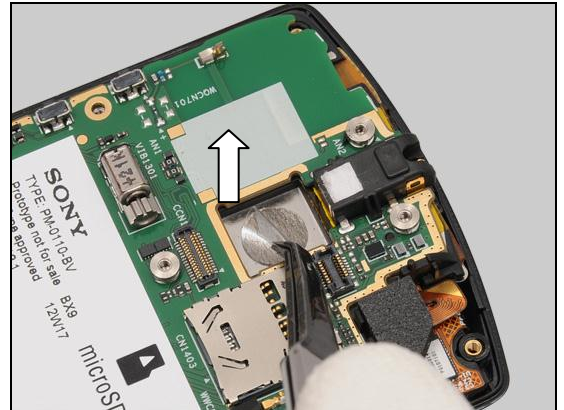


Press to secure its attachment.



Replacement: Camera Conductive Adhesive

Peel off the protection tape.



Replacement

4.10 Core Unit Label

Follow the 3.1- 3.2 Disassembly instructions!

Carry out the removal as described below.

Prepare the new Core Unit Label.

Carry out the Installation as described below.

Follow the 5.7 – 5.8 Reassembly instructions!

REMOVAL

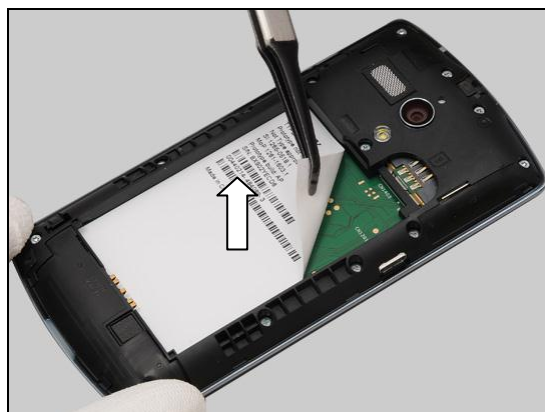
Copy old Core Unit Label information into the 'Label Print Solution' program.

Peel off the Core Unit Label by using a Flex Film Assembly Tool.

INSTALLATION

Check that the proper label format is loaded in the Zebra printer and print a new Label by using the 'Label Print Solution' software.

One label only is allowed!



Replacement: Core Unit Label

Press along the surface to secure the attachment.



Replacement

4.11 Dome Sheet

Follow the 3.1 – 3.8 Disassembly instructions!

Carry out the removal as described below.

Prepare the new Dome Sheet.

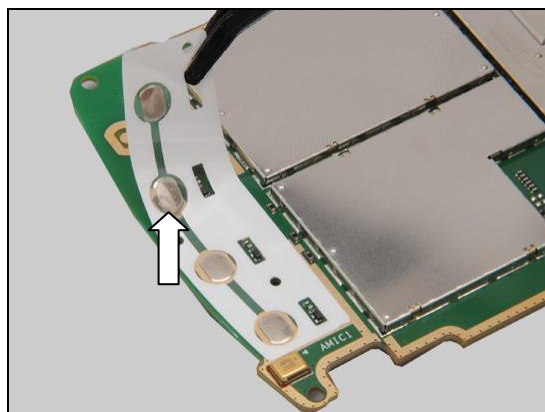
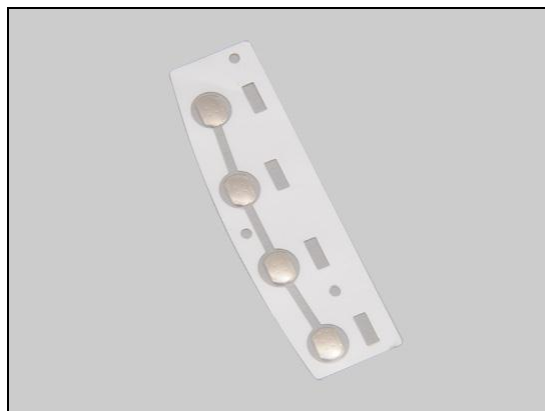
Carry out the Installation as described below.

Follow the 5.1 – 5.8 Reassembly instructions!

REMOVAL

Detach to remove the Dome Sheet by using a Flex Film Assembly Tool.

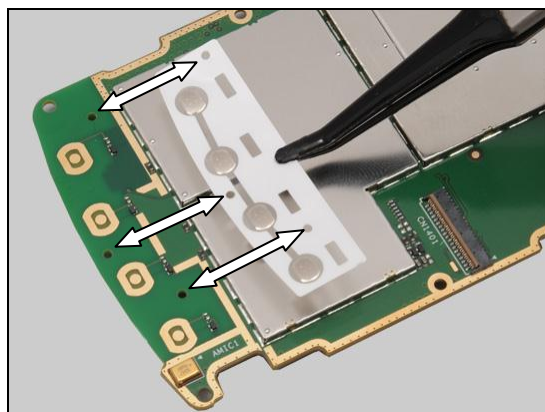
Scrap! Not to be reused!



INSTALLATION

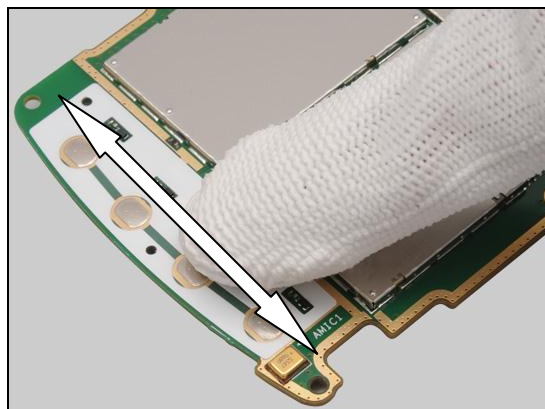
Place a new Dome Sheet in the correct position.

Note the guiding hole as shown in the picture!



Press along the surface to secure the attachment by fingers.

Make sure the Dome Sheet is assembled well with the guiding holes!



Replacement

4.12 Function Key

Follow the 3.1 – 3.5 Disassembly instructions!

Carry out the removal as described below.

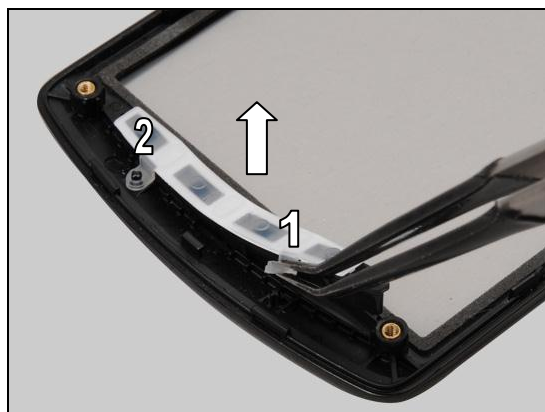
Prepare the new Function Key.

Carry out the Installation as described below.

Follow the 5.4 – 5.8 Reassembly instructions!

REMOVAL

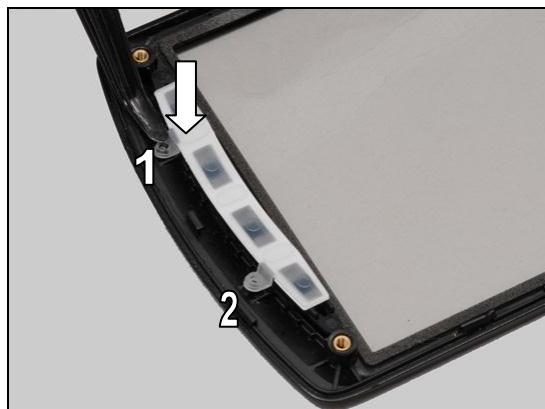
Release the Function Key from the guiding hole by using a Flex Film Assembly Tool and remove it.



INSTALLATION

Place the Function Key in the correct position.

Note the guiding poles as shown in the picture!



Press around the hole to fix it into the poles.

Replacement: Function Key

Press along to secure Function Key into the cavity.



Replacement

4.13 Gasket LCM Connector

Follow the 3.1 – 3.6 Disassembly instructions!

Carry out the removal as described below.

Prepare the new Gasket LCM Connector.

Carry out the Installation as described below.

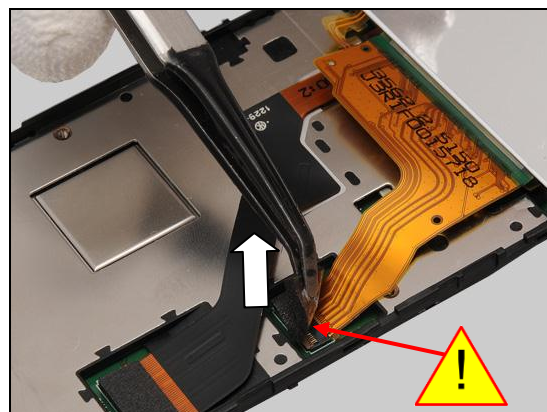
Follow the 5.3 – 5.8 Reassembly instructions!

REMOVAL

Detach the Gasket LCM Connector by using a Flex Film Assembly Tool.

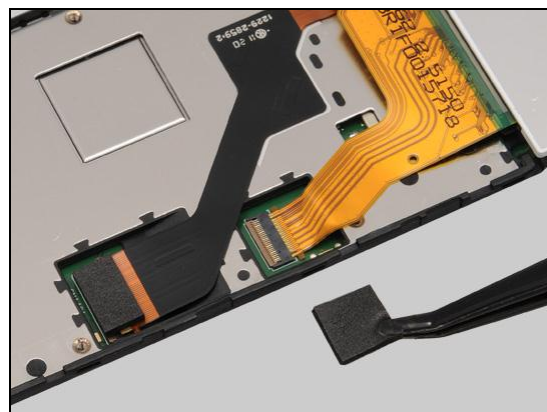
Note: Take care of the ZIF connector under the Gasket LCM Connector.

Scrap! Not to be reused!



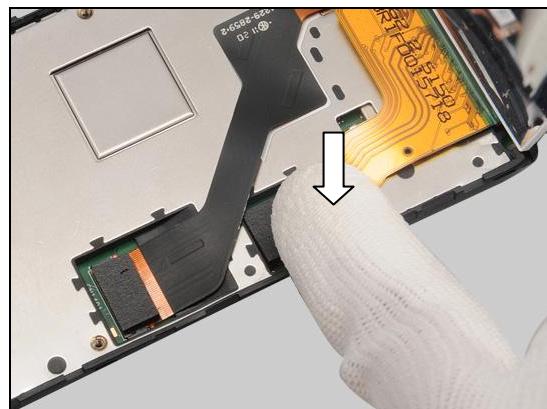
INSTALLATION

Place a new Gasket LCM Connector in the correct position.



Press to secure its position and attachment.

Note: The Gasket LCM Connector should cover the whole ZIF connector.



Replacement

4.14 Gasket PBA

Follow the 3.1 – 3.4 Disassembly instructions!

Carry out the removal as described below.

Prepare the new Gasket PBA.

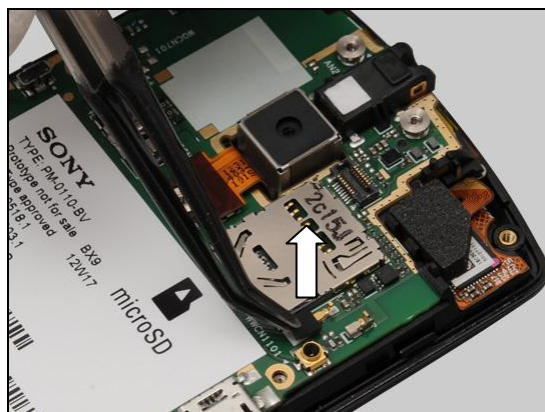
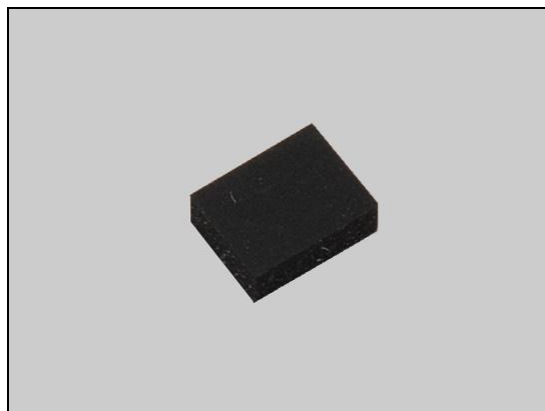
Carry out the Installation as described below.

Follow the 5.5 – 5.8 Reassembly instructions!

REMOVAL

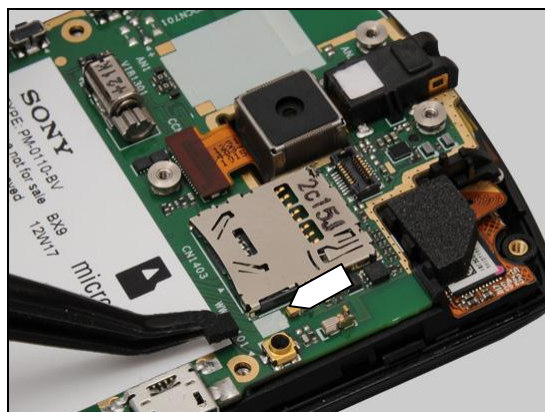
Remove the Gasket PBA by using a Flex Film Assembly Tool.

Scrap! Not to be reused!

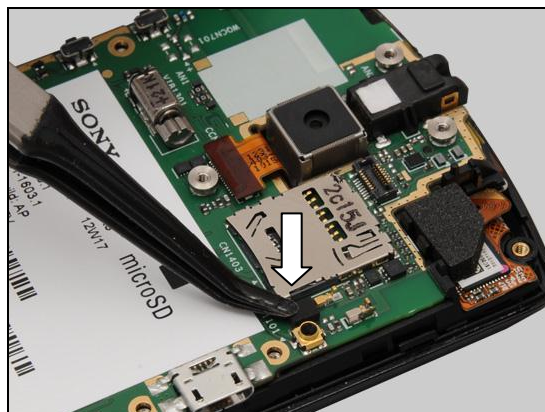


INSTALLATION

Place a new Gasket PBA in the correct position.



Press to secure its position and attachment.



Replacement

4.15 Gasket Receiver Connector

Follow the 3.1 – 3.7 Disassembly instructions!

Carry out the removal as described below.

Prepare the new Gasket Receiver Connector.

Carry out the Installation as described below.

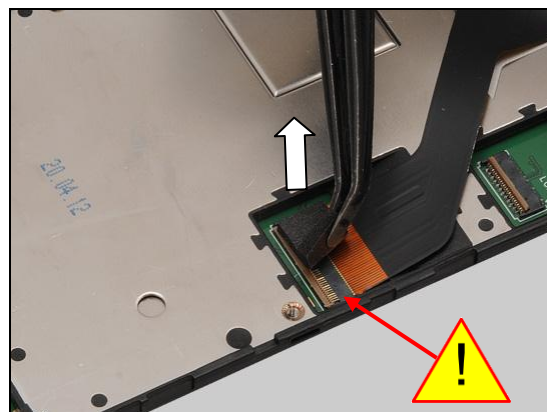
Follow the 5.2 – 5.8 Reassembly instructions!

REMOVAL

Detach the Gasket Receiver Connector.

Note: Take care of the ZIF connector under the Gasket Receiver Connector.

Scrap! Not to be reused!



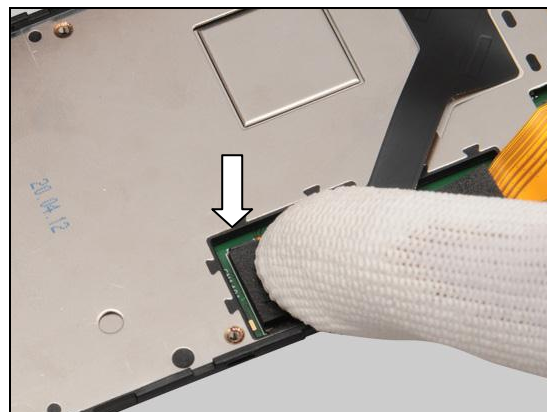
INSTALLATION

Place a new Gasket Receiver Connector in the correct position.



Press to secure its position and attachment.

Note: The Gasket Receiver Connector should cover the whole ZIF connector.



Replacement

4.16 Gasket TP Connector

Follow the 3.1 – 3.4 Disassembly instructions!

Carry out the removal as described below.

Prepare the new Gasket TP Connector.

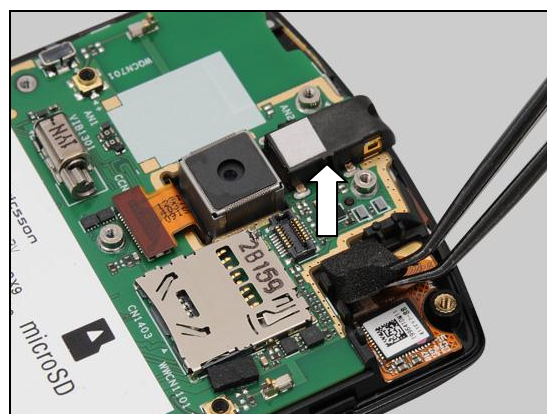
Carry out the Installation as described below.

Follow the 5.5 – 5.8 Reassembly instructions!

REMOVAL

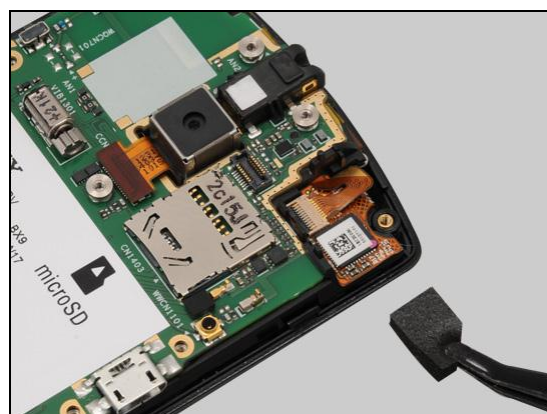
Peel off the Gasket TP Connector by using a Flex Film Assembly Tool.

Scrap! Not to be reused!



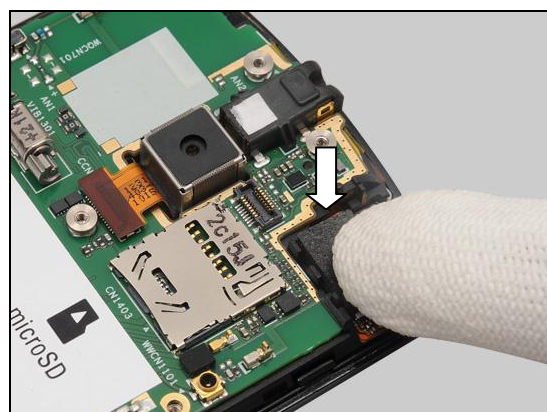
INSTALLATION

Place a new Gasket TP Connector in the correct position.



Press to secure its position and attachment.

Note: The Gasket TP Connector should cover the whole ZIF connector.



Replacement

4.17 Kapton LCM FPC

Follow the 3.1 – 3.6 Disassembly instructions!

Follow the 4.13 Removal instructions!

Carry out the removal as described below.

Prepare the new Kapton LCM FPC.

Carry out the Installation as described below.

Follow the 4.13 Installation instructions!

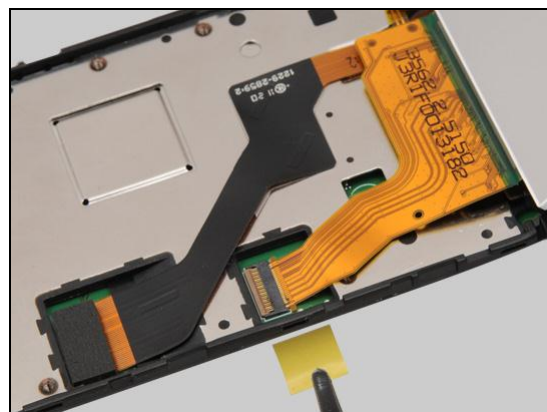
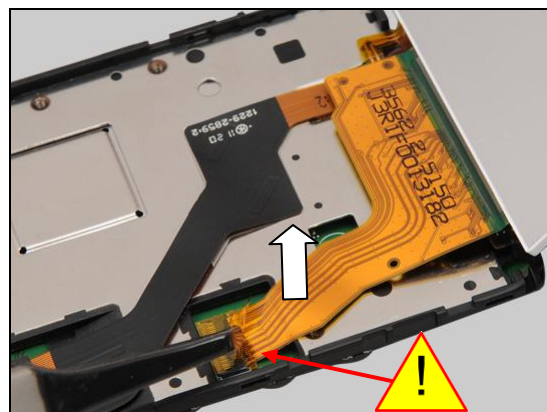
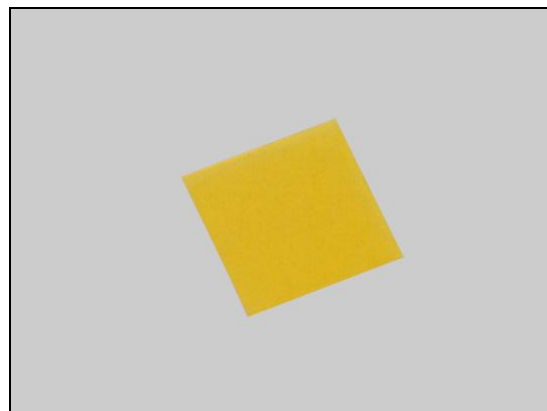
Follow the 5.3 – 5.8 Reassembly instructions!

REMOVAL

Detach the Kapton LCM FPC by using a Flex Film Assembly Tool.

Note: Do not damage the ZIF connector under the Kapton LCM FPC.

Scrap! Not to be reused!

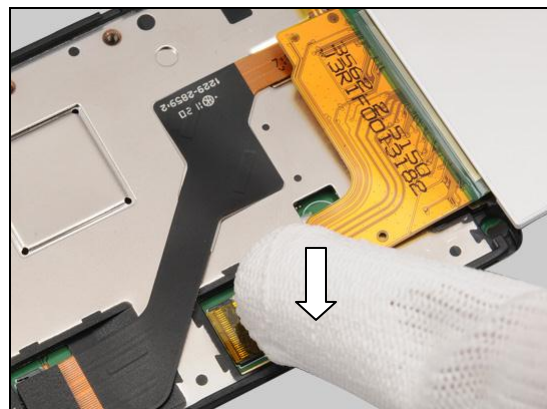


INSTALLATION

Place a new Kapton LCM FPC in the correct position.

Press to secure its position and attachment.

Note: The Kapton LCM FPC should cover the whole ZIF connector.



Replacement

4.18 LED indicator & LED indicator adhesive

Follow the 3.1 – 3.3 Disassembly instructions!

Carry out the removal as described below.

Prepare the new LED indicator & LED indicator adhesive.

Carry out the Installation as described below.

Follow the 5.6 – 5.8 Reassembly instructions!

REMOVAL

The LED indicator is in the position as shown in the picture.

Detach to remove the LED indicator from its cavity.

Peel off the LED indicator adhesive by using a Flex Film Assembly Tool and clean the residue until it is clean.

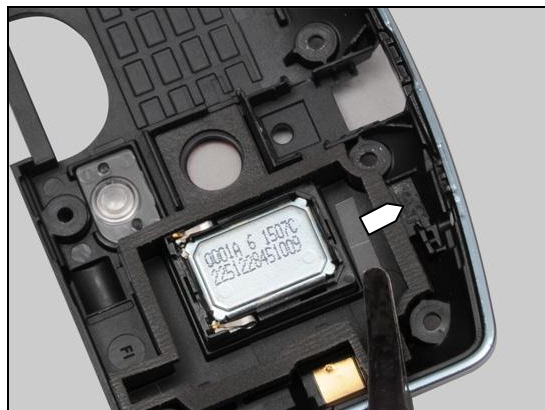
Scrap! Not to be reused!



Replacement: LED indicator & LED indicator adhesive

INSTALLATION

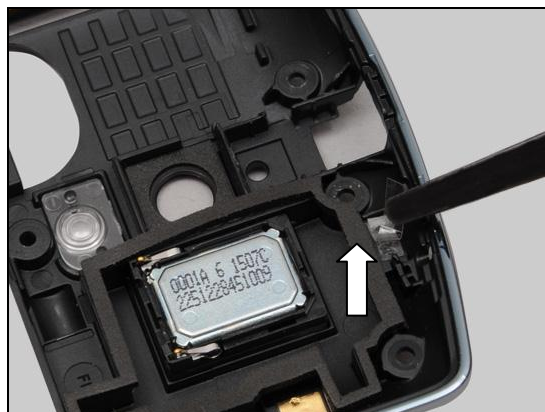
Place a new LED indicator adhesive in the correct position.



Press to secure its position and attachment.



Peel off the protection tape.



Place a new LED indicator in the correct position.

Note the guiding hole as shown in the picture!

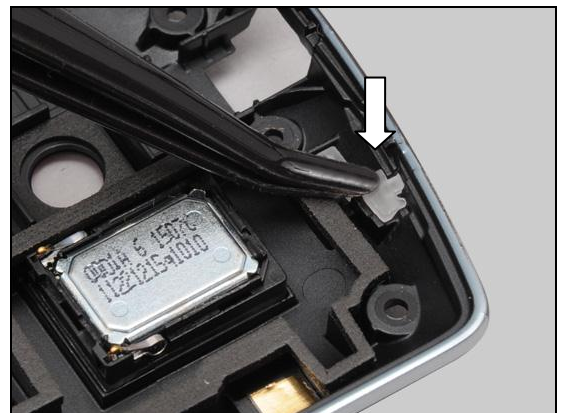


Replacement: LED indicator & LED indicator adhesive

Insert the LED indicator into the hole.



Press to secure its position and attachment into the cavity.



Press to secure its position and attachment.



Replacement

4.19 Loudspeaker & Gasket Speaker

Follow the 3.1 – 3.3 Disassembly instructions!

Carry out the removal as described below.

Prepare the new Loudspeaker & Gasket Speaker.

Carry out the Installation as described below.

Follow the 5.6 – 5.8 Reassembly instructions!



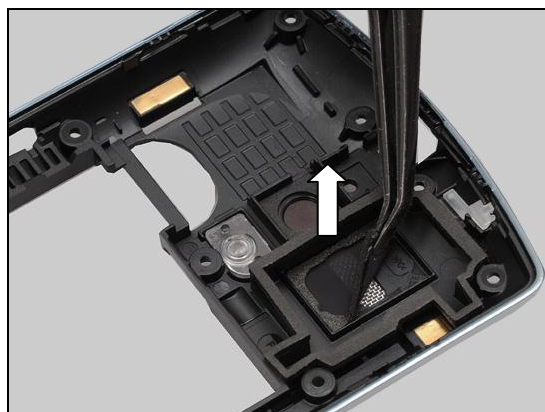
REMOVAL

Detach to remove the Loudspeaker.



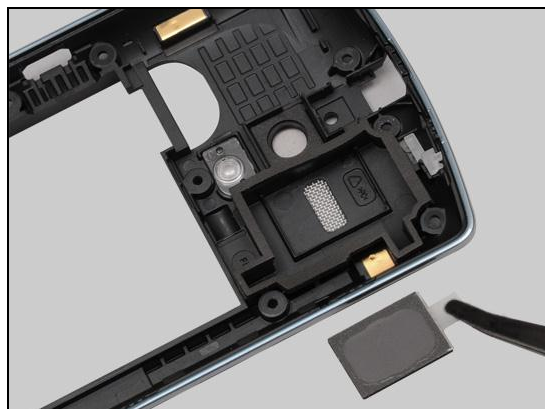
Peel off the Gasket Speaker by using a Flex Film Assembly Tool and clean the residue until it is clean.

Scrap! Not to be reused!



INSTALLATION

Place a new Gasket Speaker in the correct position.

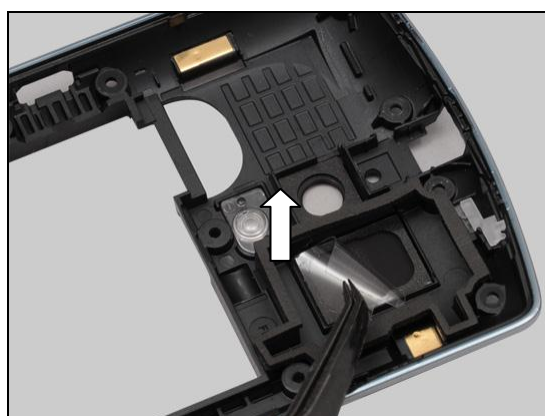


Replacement: Loudspeaker & Gasket Speaker

Press to secure its position and attachment.



Peel off the protection tape.



Place a new Loudspeaker in the correct position.

Note the pin direction as shown in the picture!



Press to secure its position and attachment.

Do not touch the pins!



Replacement

4.20 Main Camera

Follow the 3.1 – 3.4 Disassembly instructions!

Follow the 4.9 Removal instructions!

Carry out the removal as described below.

Prepare the new Main Camera.

Carry out the Installation as described below.

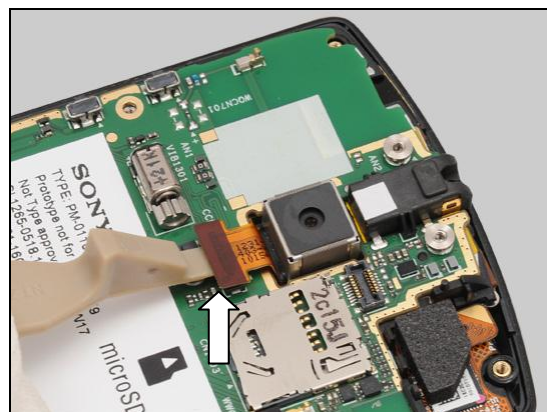
Follow the 4.9 Installation instructions!

Follow the 5.5 – 5.8 Reassembly instructions!

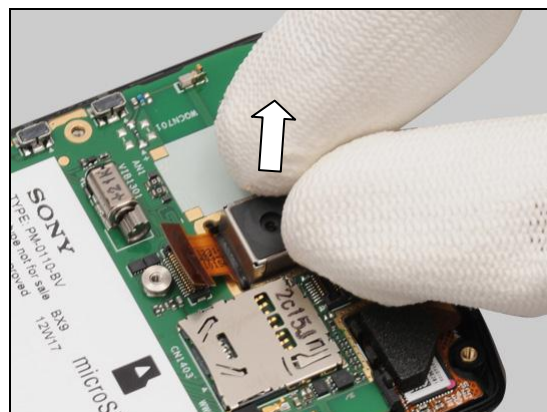


REMOVAL

Unsnap the BtB connector.

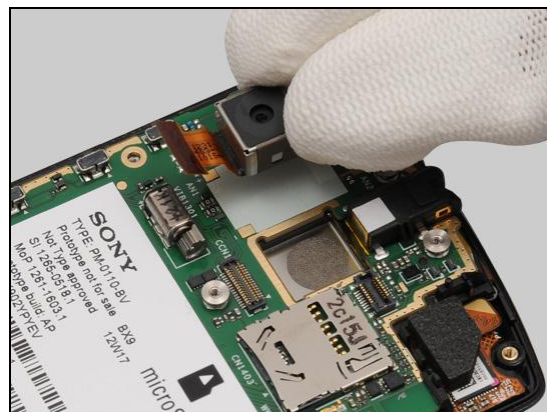


Remove the Main Camera.



INSTALLATION

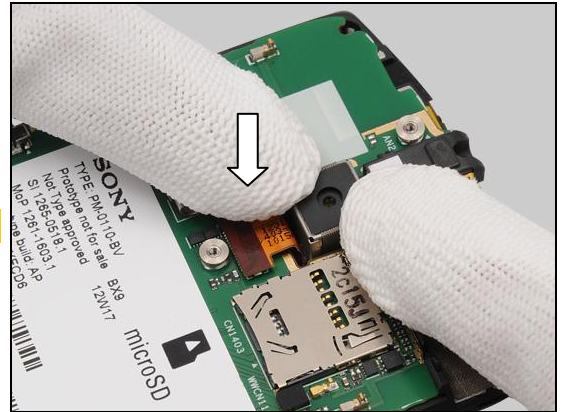
Place a new Main Camera in the correct position.



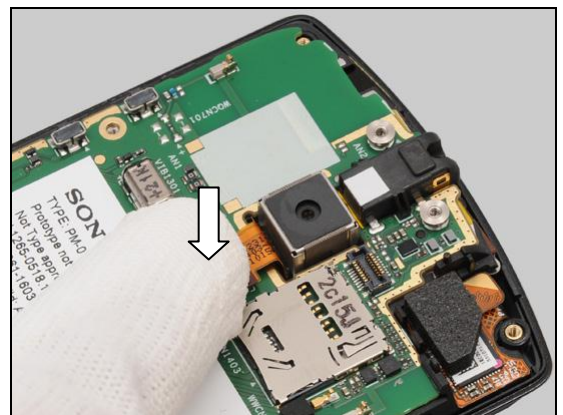
Replacement: Main Camera

Press to secure its position and attachment.

Do not touch the camera lens!



Press to snap the BtB connector.



Replacement

4.21 Mesh Speaker

Follow the 3.1 – 3.2 Disassembly instructions!

Carry out the removal as described below.

Prepare the new Mesh Speaker.

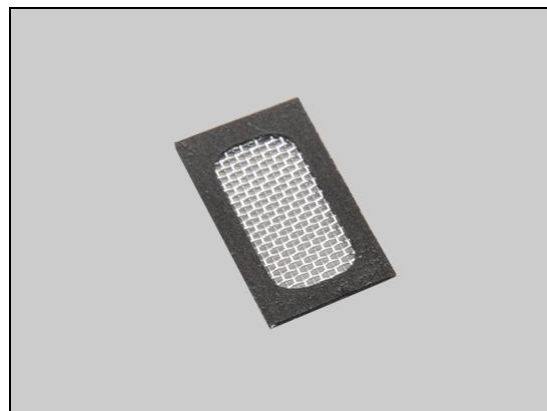
Carry out the Installation as described below.

Follow the 5.7 – 5.8 Reassembly instructions!

REMOVAL

Peel off the Mesh Speaker by using a Flex Film Assembly Tool and clean the residue until it is clean.

Scrap! Not to be reused!



INSTALLATION

Place a new Mesh Speaker in the correct position.



Press around to secure its position and attachment.



Replacement

4.22 PBA Receiver Flex & Mylar Tape Receiver & Receiver Adhesive

Follow the 3.1 – 3.8 Disassembly instructions!

Carry out the removal as described below.

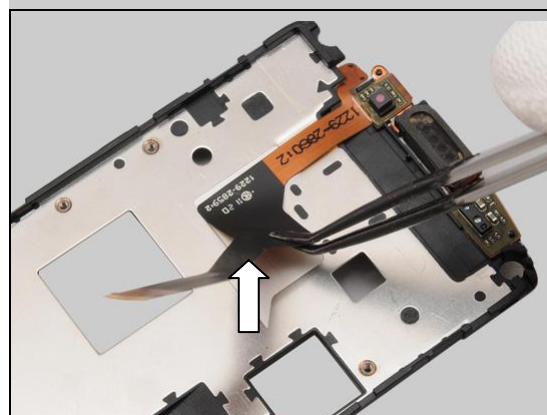
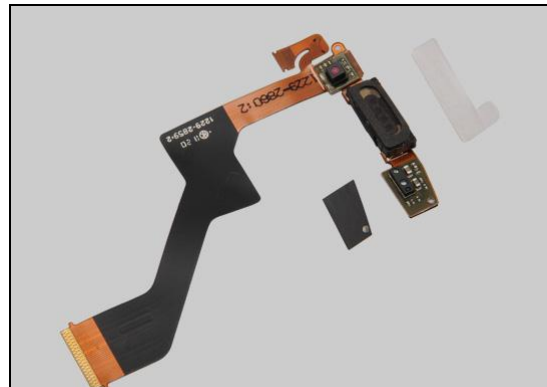
Prepare the new PBA Receiver Flex & Mylar Tape Receiver & Receiver Adhesive.

Carry out the Installation as described below.

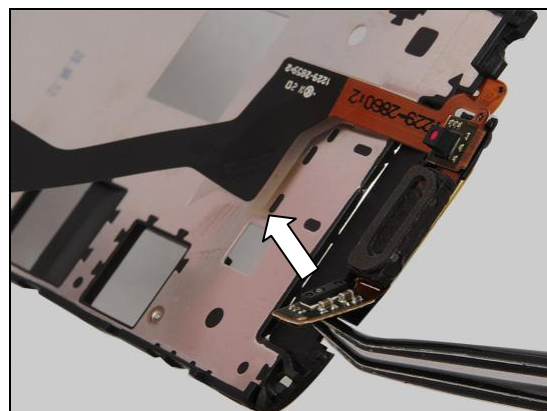
Follow the 5.1 – 5.8 Reassembly instructions!

REMOVAL

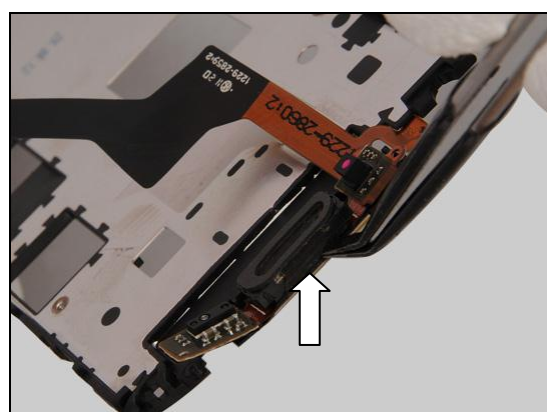
Detach to release the adhesive under FPC.



Push from opposite side through the hole to release the adhesive of PBA Receiver Flex.

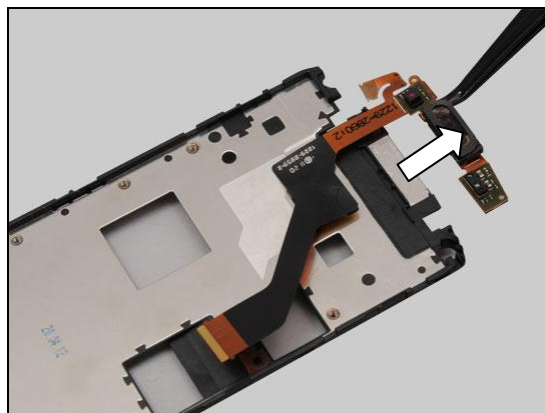


Detach to release the adhesive under receiver part.



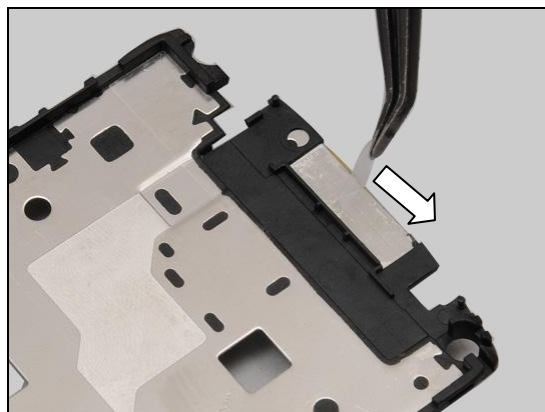
Replacement: PBA Receiver Flex & Mylar Tape Receiver & Receiver Adhesive

Separate the PBA Receiver Flex.



Detach to remove the Receiver Adhesive and clean the residue until its clean.

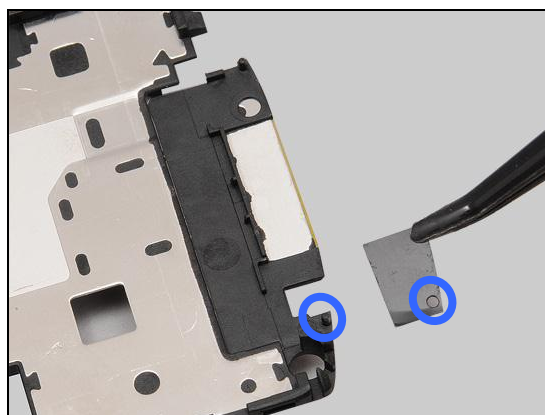
Scrap! Not to be reused!



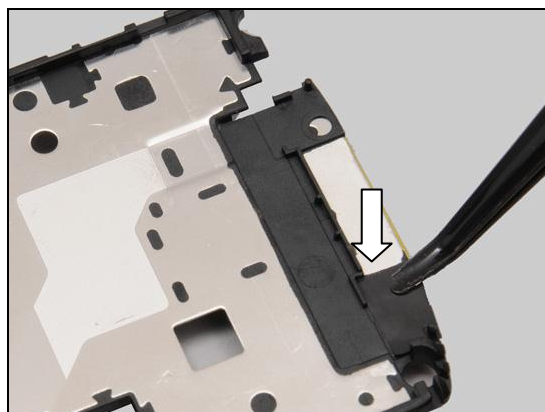
INSTALLATION

Place a new Mylar Tape Receiver in the correct position.

Note the guiding hole!

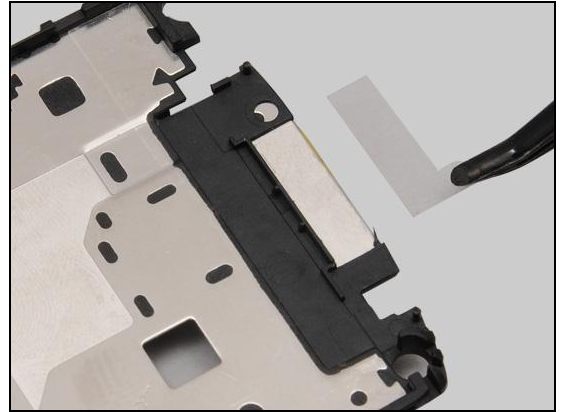


Press to secure its position and attachment.

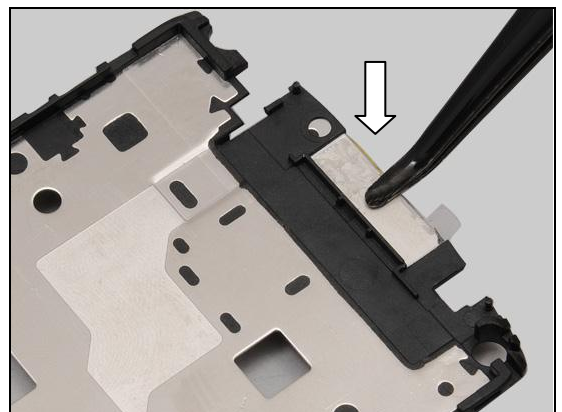


Replacement: PBA Receiver Flex & Mylar Tape Receiver & Receiver Adhesive

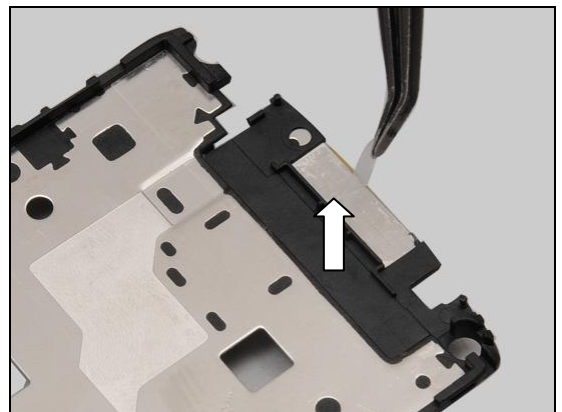
Place a new Receiver Adhesive in the correct position.



Press to secure its attachment.

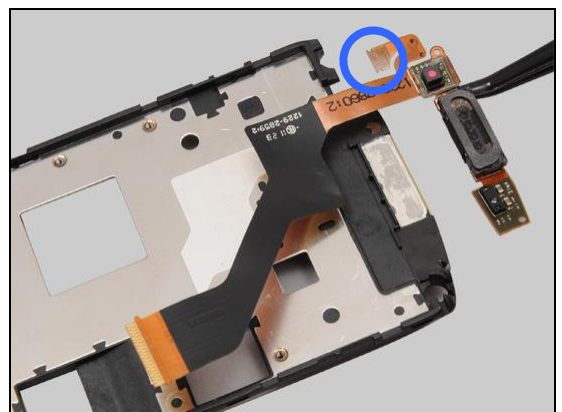


Peel off the protection tape.



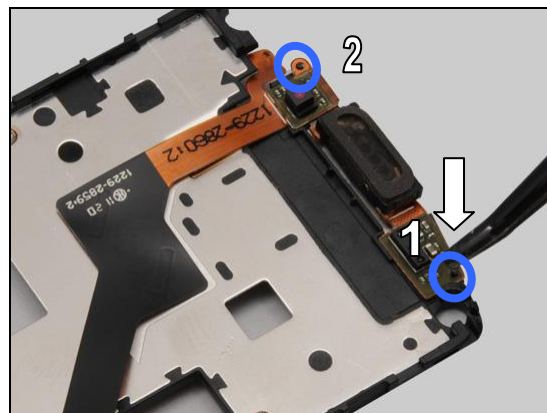
Place the PBA Receiver Flex in the correct position.

Note: The FPC should be placed at the back side of the LCD Frame.



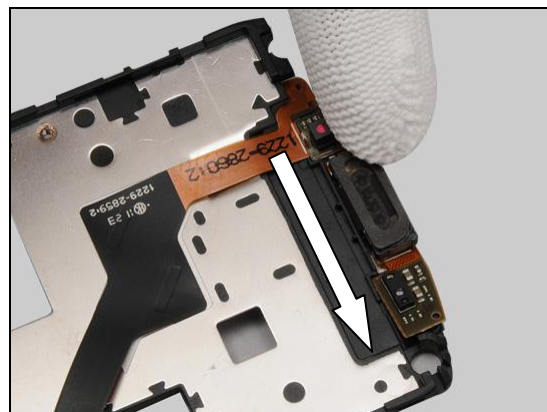
Replacement: PBA Receiver Flex & Mylar Tape Receiver & Receiver Adhesive

Press to fix the holes it into the guiding poles.

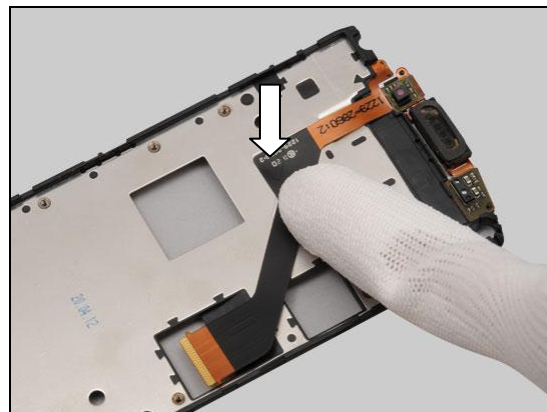


Press along the surface to secure its attachment.

Only the edge of Receiver gasket can be pressed.



Press the surface of FPC to secure its attachment.



Replacement

4.23 Receiver Mesh

Follow the 3.1 – 3.5 Disassembly instructions!
 Carry out the removal as described below.
 Prepare the new Receiver Mesh.
 Carry out the Installation as described below.
Follow the 5.4 – 5.8 Reassembly instructions!

REMOVAL

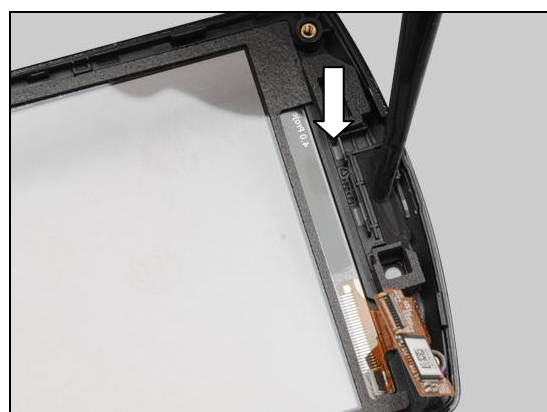
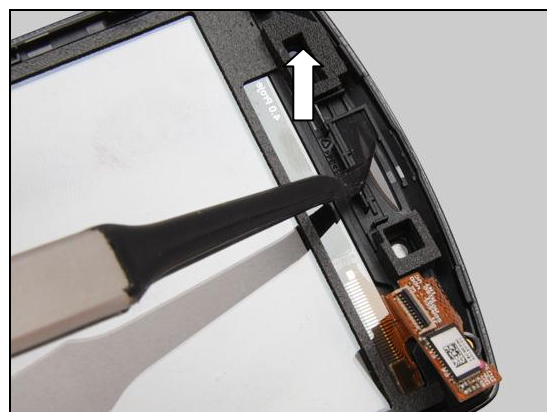
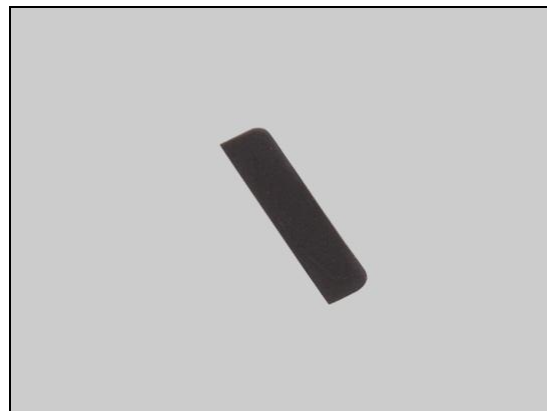
Peel off the Receiver Mesh by using a Flex Film Assembly Tool.

Scrap! Not to be reused!

INSTALLATION

Place a new Receiver Mesh in the correct position.

Press to secure its position and attachment.



Replacement

4.24 Rubber Microphone

Follow the 3.1 – 3.3 Disassembly instructions!

Carry out the removal as described below.

Prepare the new Rubber Microphone.

Carry out the Installation as described below.

Follow the 5.6 – 5.8 Reassembly instructions!

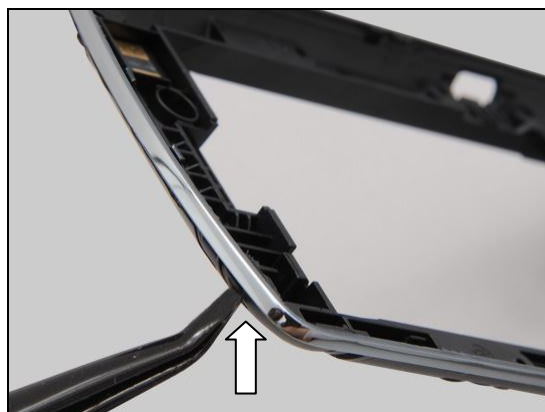
REMOVAL

The Rubber Microphone is in the position as shown in the picture.

Push the Rubber Microphone from the opposite side to remove it.

INSTALLATION

Place a new Rubber Microphone in the correct position.



Replacement: Rubber Microphone

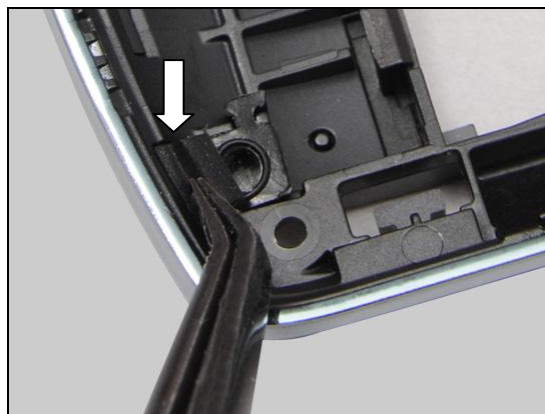
Place the Rubber Microphone into the cavity as shown in the picture and press to secure its position.



Press to secure its position into the cavity.



Press to insert it into the cavity.



The Rubber Microphone should be assembled as shown in the picture.



Replacement

4.25 Shield can BB

Follow the 3.1 – 3.8 Disassembly instructions!

Carry out the removal as described below.

Prepare the new Shield can BB.

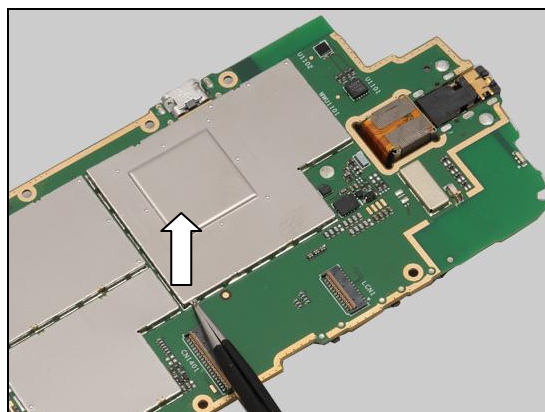
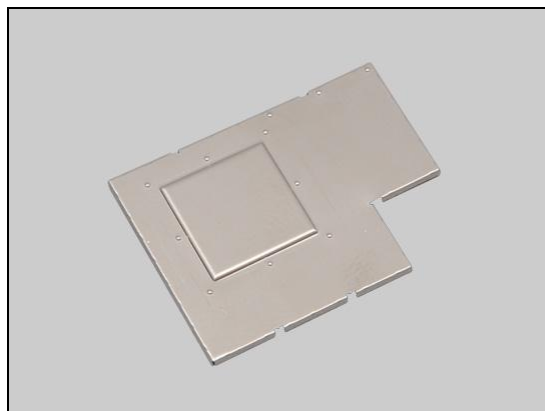
Carry out the Installation as described below.

Follow the 5.1 – 5.8 Reassembly instructions!

REMOVAL

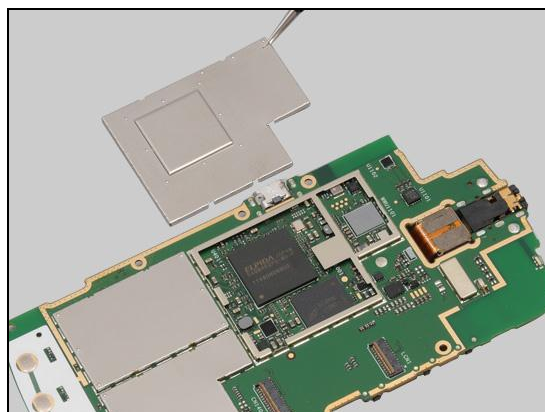
Unsnap the corners of the Shield can BB by using a pair of Tweezers and pull upwards to remove it.

Scrap! Not to be reused!



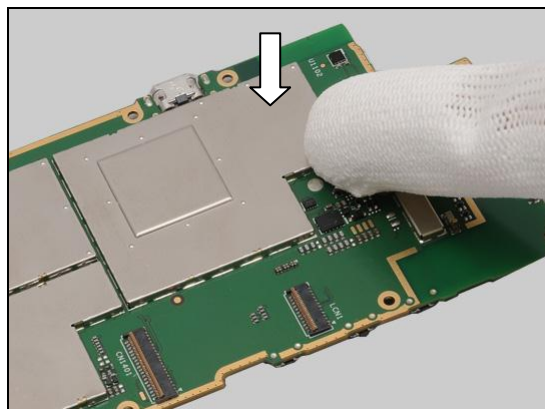
INSTALLATION

Place a new Shield can BB in the correct position.



Press all the corners to snap it.

Only the edge of the Shield Can is allowed to press.



Replacement

4.26 Shield can PA

Follow the 3.1 – 3.8 Disassembly instructions!

Carry out the removal as described below.

Prepare the new Shield can PA.

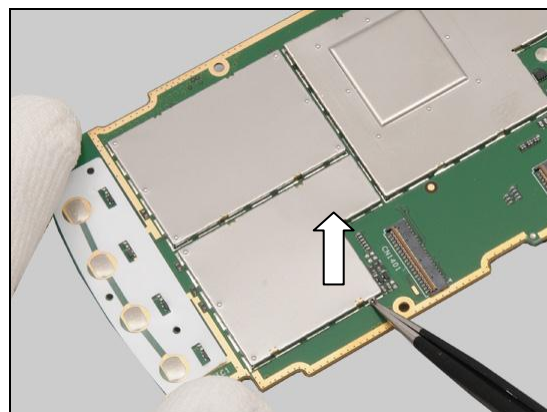
Carry out the Installation as described below.

Follow the 5.1 – 5.8 Reassembly instructions!

REMOVAL

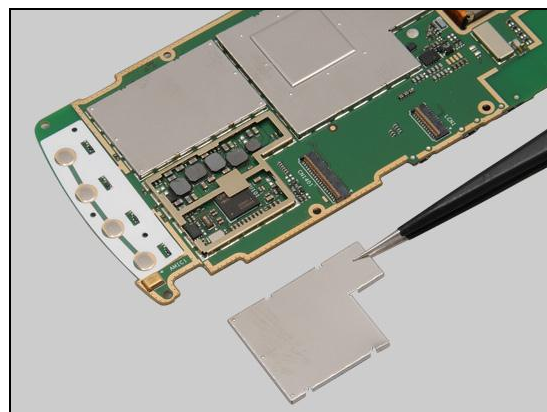
Unsnap the corners of the Shield can PA by using a pair of Tweezers and pull upwards to remove it.

Scrap! Not to be reused!



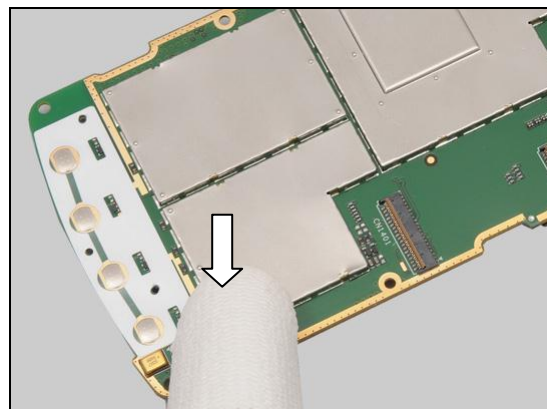
INSTALLATION

Place a new Shield can PA in the correct position.



Press all the corners to snap it.

Only the edge of the Shield Can is allowed to press.



Replacement

4.27 Shield can RF

Follow the 3.1 – 3.8 Disassembly instructions!

Carry out the removal as described below.

Prepare the new Shield can RF.

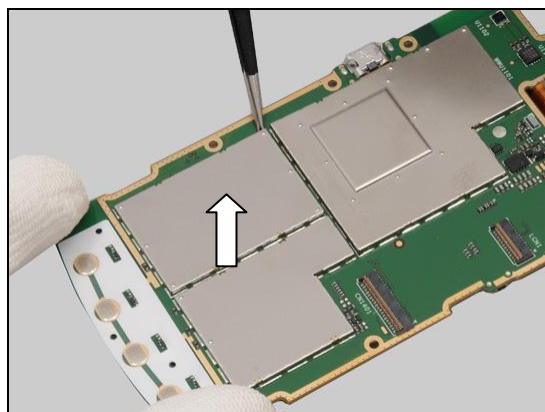
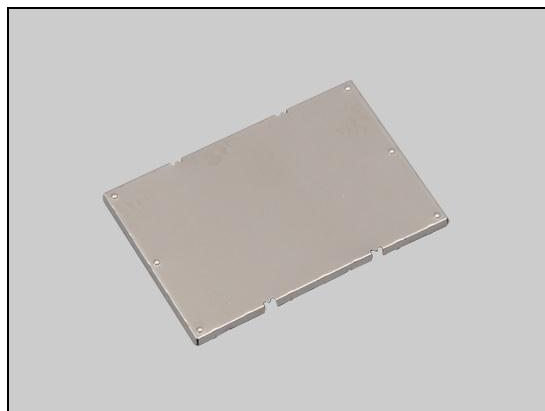
Carry out the Installation as described below.

Follow the 5.1 – 5.8 Reassembly instructions!

REMOVAL

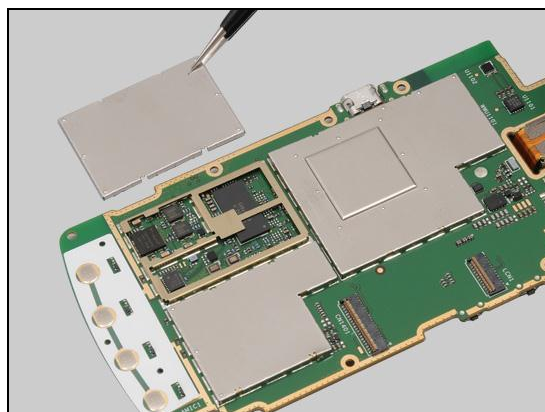
Unsnap the corners of the Shield can RF by using a pair of Tweezers and pull upwards to remove it.

Scrap! Not to be reused!



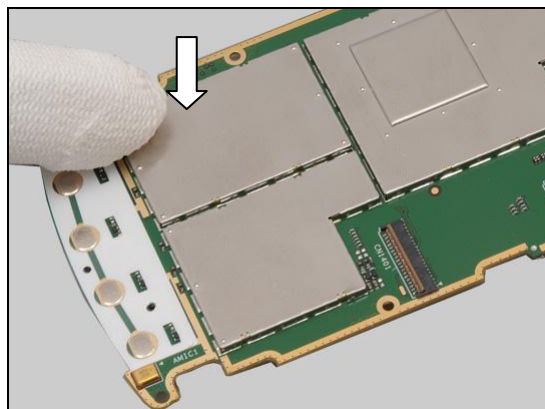
INSTALLATION

Place a new Shield can RF in the correct position.



Press all the corners to snap it.

Only the edge of the Shield Can is allowed to press.



Replacement

4.28 Side Key

Follow the 3.1 -3.2 Disassembly instructions!

Carry out the removal as described below.

Prepare the new Side Key.

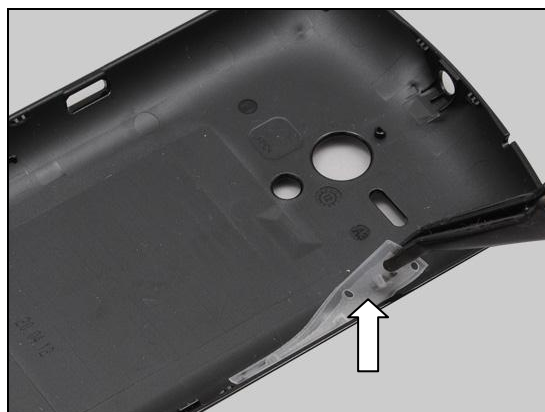
Carry out the Installation as described below.

Follow the 5.7 – 5.8 Reassembly instructions!

REMOVAL

Detach to remove it.

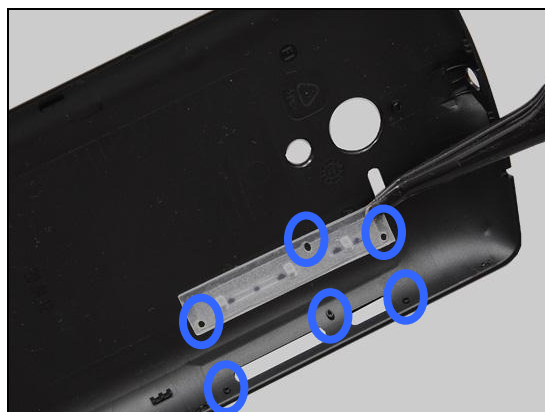
Scrap! Not to be reused!



INSTALLATION

Place a new Side Key in the correct position.

Note the guiding hole as shown in the picture!



Press to secure its position and attachment.



Replacement

4.29 Tape RF Hole

Follow the 3.1 – 3.2 Disassembly instructions!

Carry out the removal as described below.

Prepare the new Tape RF Hole.

Carry out the Installation as described below.

Follow the 5.7 – 5.8 Reassembly instructions!

REMOVAL

Detach to remove it.



INSTALLATION

Place a new Tape RF Hole in the correct position.



Press to secure its position and attachment.



Replacement

4.30 Touch Panel Conductive Adhesive

Follow the 3.1 – 3.8 Disassembly instructions!

Carry out the removal as described below.

Prepare the new Touch Panel Conductive Adhesive.

Carry out the Installation as described below.

Follow the 5.1 – 5.8 Reassembly instructions!

REMOVAL

Detach to remove it.

Scrap! Not to be reused!

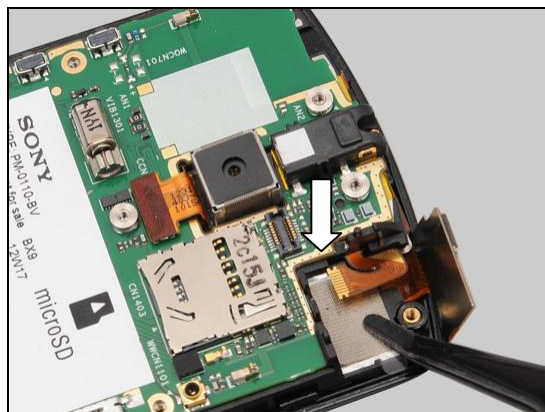


INSTALLATION

Place a new Touch Panel Conductive Adhesive in the correct position.

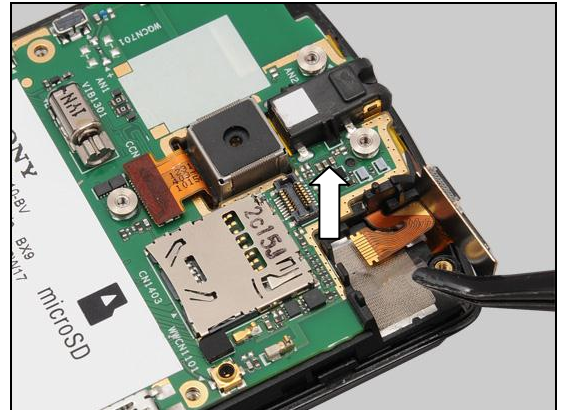


Press to secure its attachment.



Replacement: Touch Panel Conductive Adhesive

Peel off the protection tape.



Replacement

4.31 Water Indicator

Follow the 3.1 – 3.3 Disassembly instructions!

Carry out the removal as described below.

Prepare the new Water Indicator.

Carry out the Installation as described below.

Follow the 5.6 – 5.8 Reassembly instructions!

REMOVAL

There are two Water Indicators on the phone as shown in the picture.

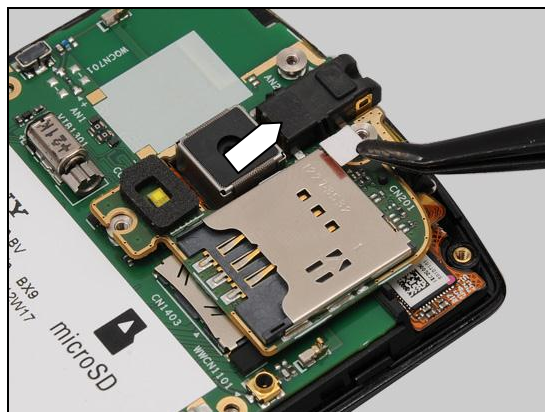
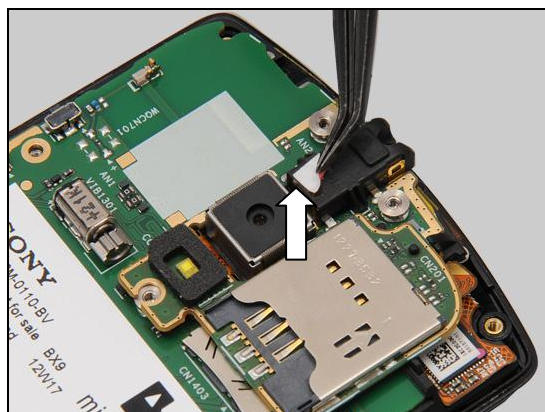
Note: Replacement method is the same for the two Water Indicators!

Detach to remove it.

Scrap! Not to be reused!

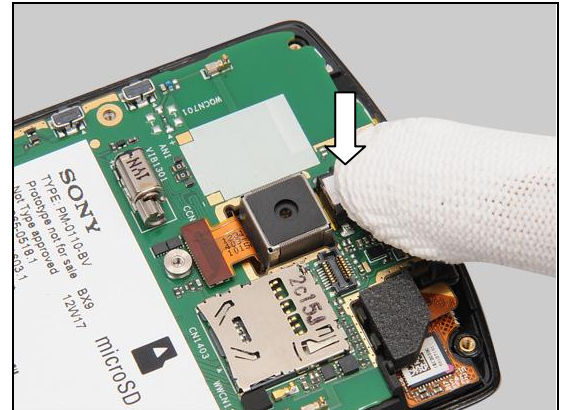
INSTALLATION

Place a new Water Indicator in the correct position.



Replacement: Water Indicator

Press to secure its position and attachment.



Replacement: Board Swap

4.32 Board Swap

4.32.1 Board Swap- Replacement

Follow the 3.1 – 3.8 Disassembly instructions!

Follow the 4.20 Removal instructions!

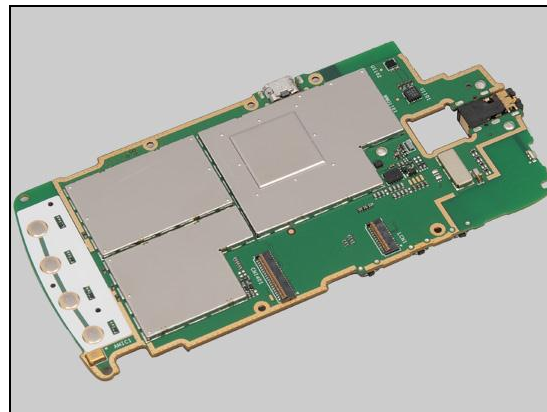
Replace the Swap Board.

Reuse the Main Camera.

Follow the 4.20 Installation instructions!

Follow the 5.1 – 5.8 Reassembly instructions!

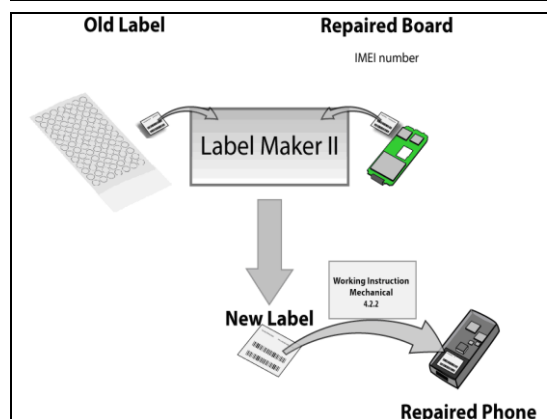
NOTE: Startup the unit to initialize settings, before perform Customize Phone in Emma



4.32.2 Board Swap – Change Label

CHANGE LABEL

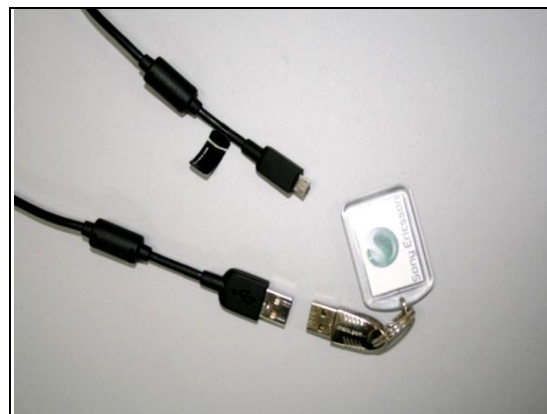
Follow the instructions in the Generic Repair Manual – Build swap for change of label.



4.32.3 Board Swap – Customize of Software

CUSTOMIZE OF SOFTWARE

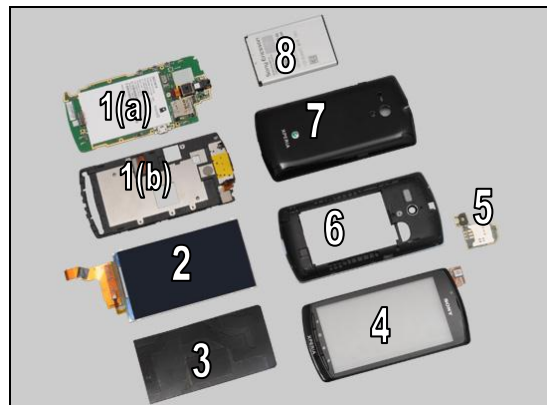
Follow the instructions in the Generic Repair Manual – Build swap for customization of the software.



5 Reassembly

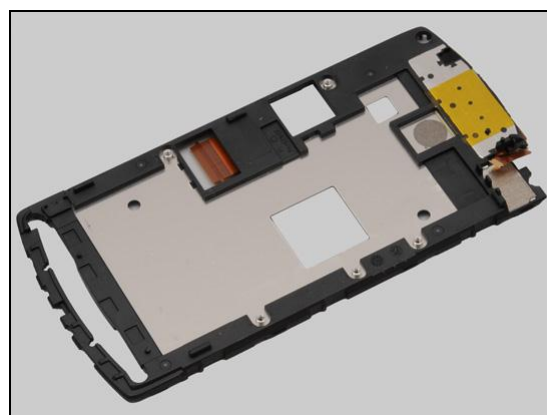
The reassembly is done in the following order:

1. Main PBA (a) & LCD Frame (b)
2. Display
3. Cushion LCD Shim Black
4. Front Cover Assy
5. Sub SIM PBA Assy
6. Rear Cover Assembly
7. Battery Cover
8. Battery

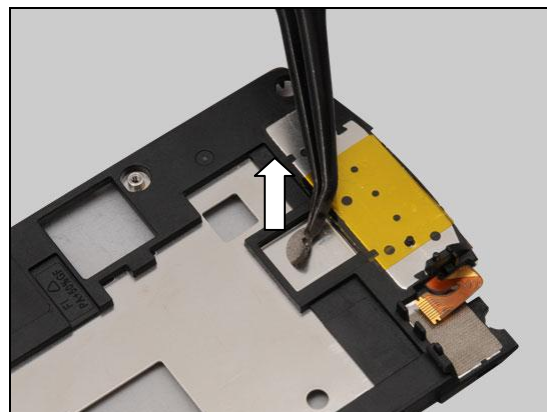


5.1 Main PBA & LCD Frame

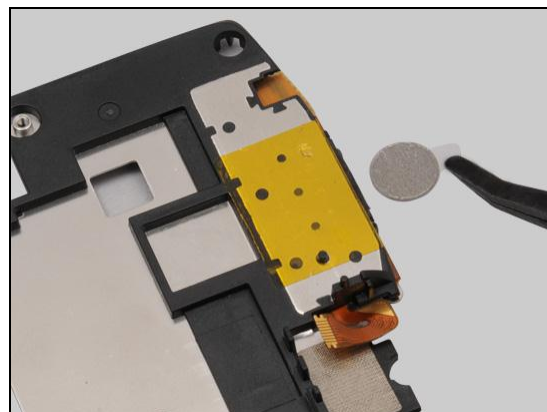
Prepare the LCD Frame.



Peel off the Camera Conductive Adhesive and clean the residue until it is clean.

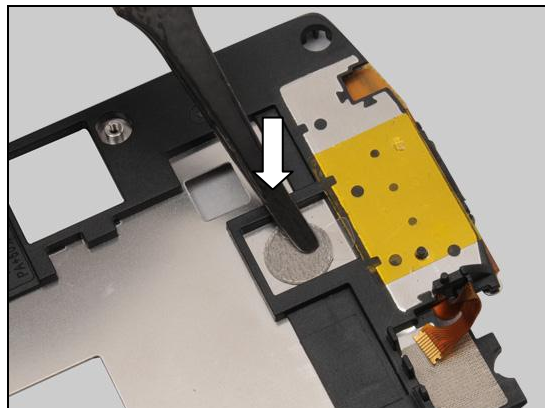


Place a new Camera Conductive Adhesive in the correct position.

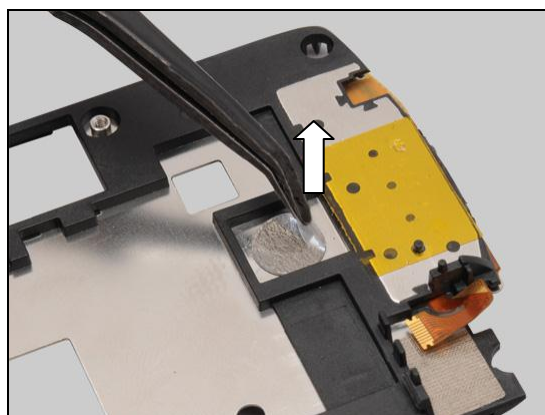


Reassembly

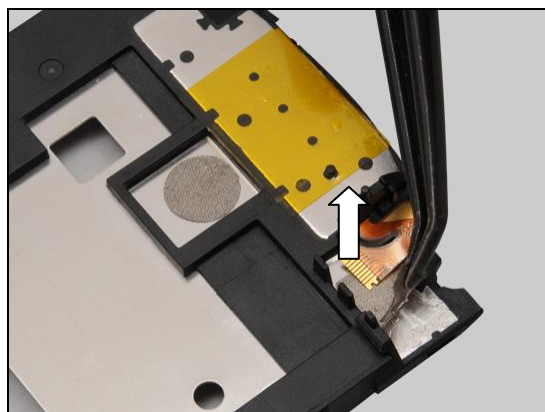
Press to secure its position and attachment.



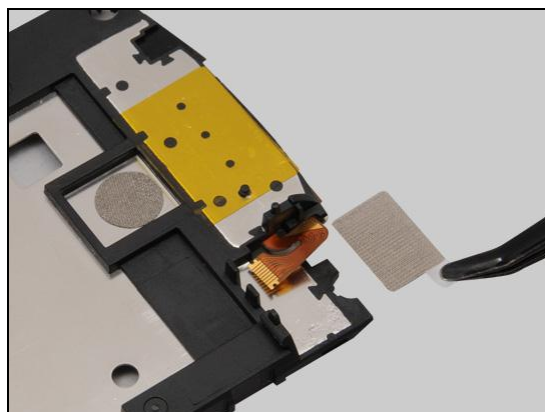
Peel off the protection tape.



Peel off the Touch Panel Conductive Adhesive and clean the residue until it is clean.

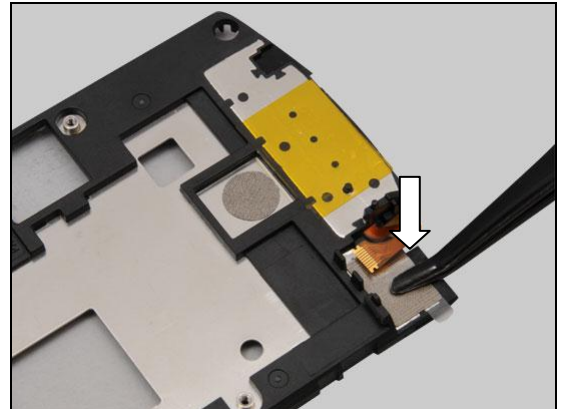


Place a new Touch Panel Conductive Adhesive in the correct position.

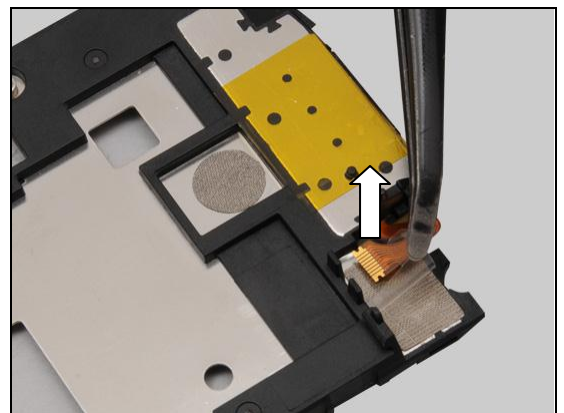


Reassembly

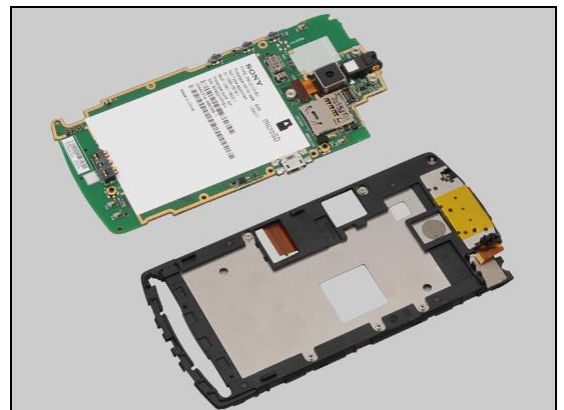
Press to secure its position and attachment.



Peel off the protection tape.



Prepare the Main PBA and LCD Frame.

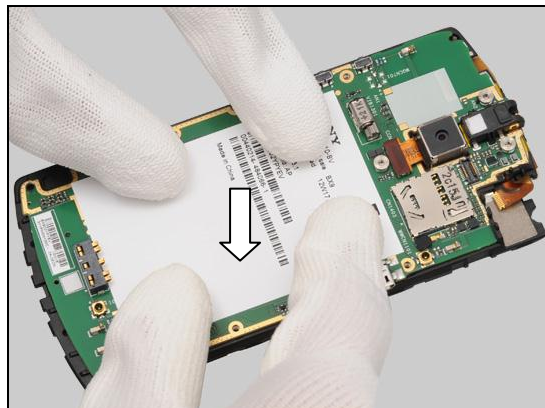


Insert the Main PBA from the left side to hook the Main PBA as shown in the picture.



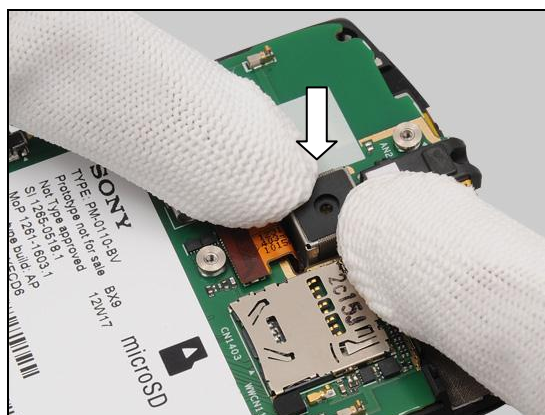
Reassembly

Press to snap the Main PBA.



Press the Main Camera to secure its position.

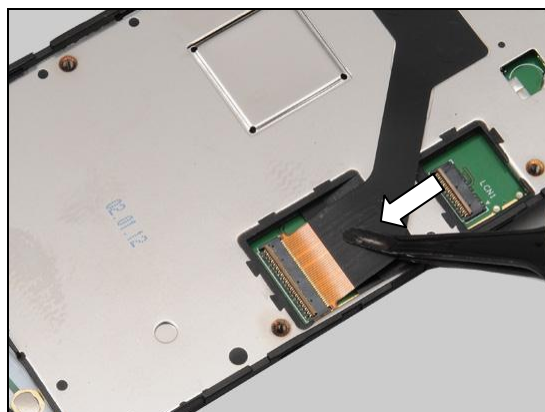
Do not touch the camera lens!



Turn it over.

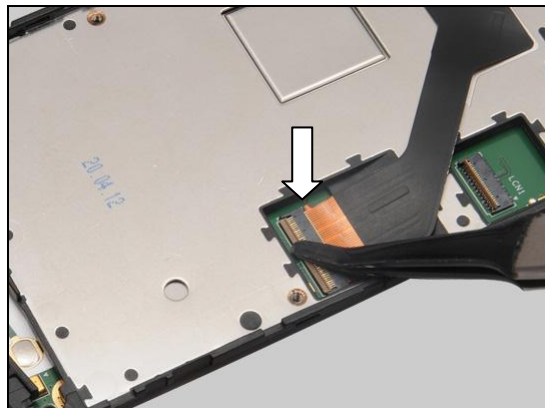


Connect the ZIF connector.

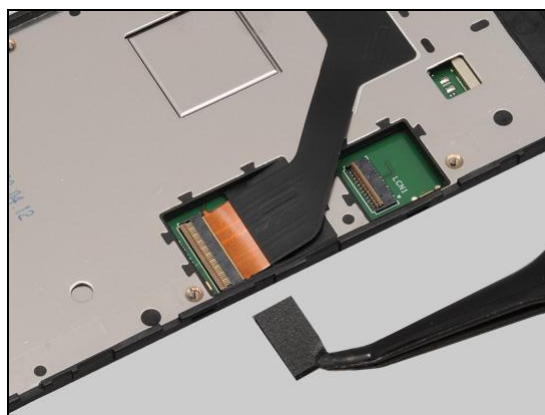


Reassembly

Lock the ZIF connector.

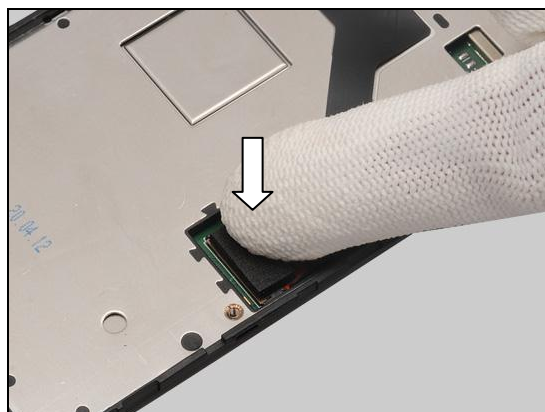


Place a new Gasket Receiver Connector in the correct position.



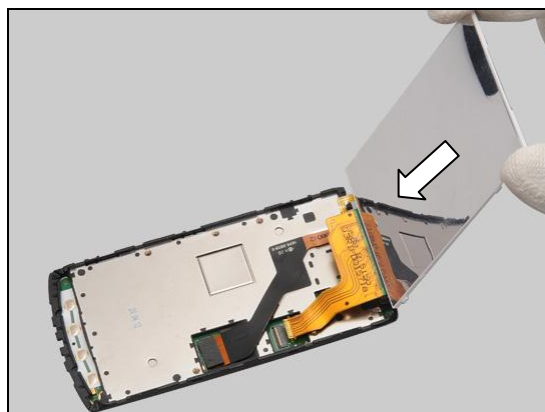
Press to secure its attachment.

Note: The Gasket Receiver Connector should cover ZIF connector.



5.2 Display

Prepare the Display.



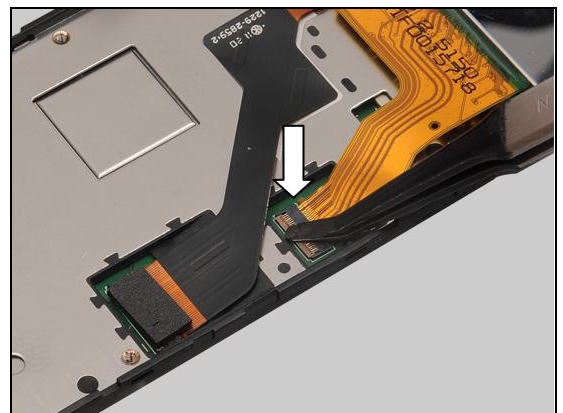
Reassembly

Connect the ZIF connector.

Do not hold the FPC with adhesive as shown in the picture!



Lock the ZIF connector.



Press to secure its attachment.



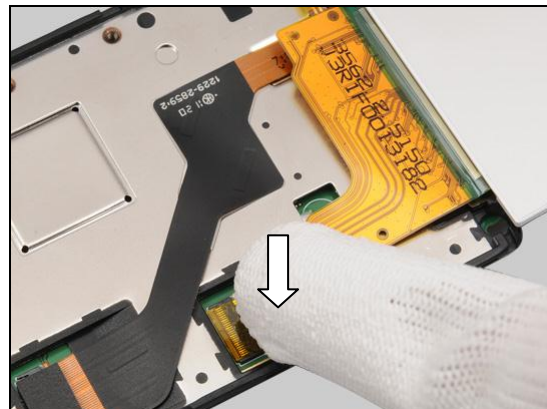
Place a new Kapton LCM FPC in the correct position.



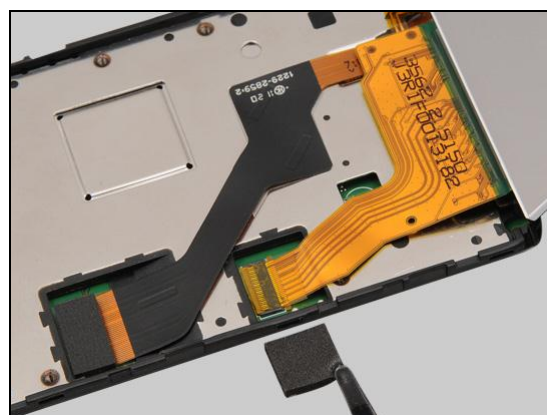
Reassembly

Press to secure its position and attachment.

Note: The Kapton LCM FPC should cover the whole ZIF connector.

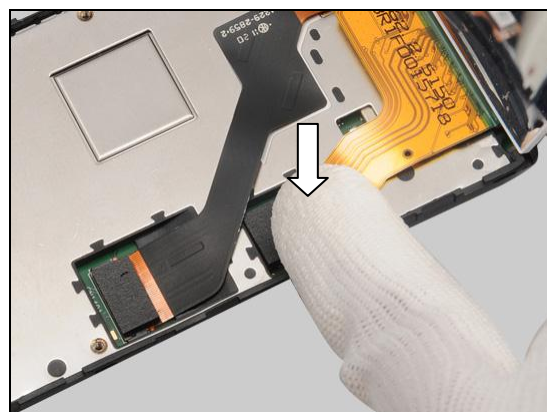


Place a new Gasket LCM Connector in the correct position.



Press to secure its attachment.

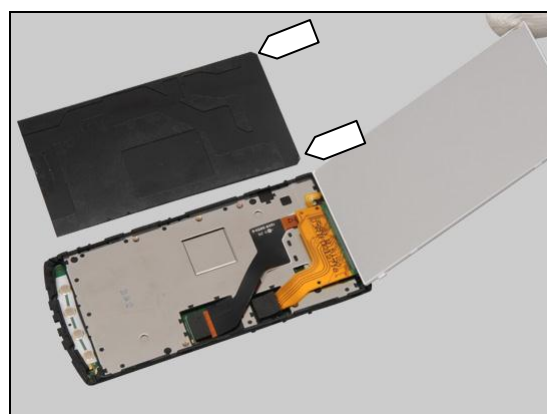
Note: The Gasket LCM Connector should cover ZIF connector.



5.3 Cushion LCD Shim Black

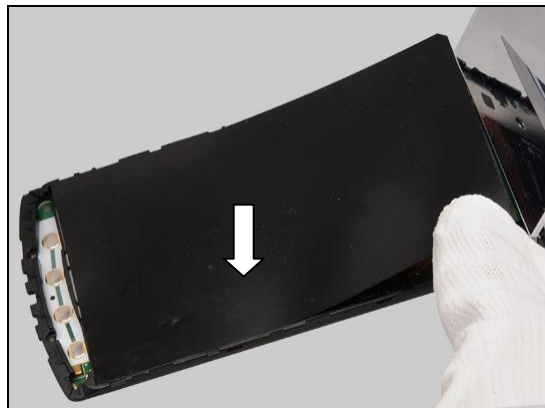
Prepare the Cushion LCD Shim Black.

Note the direction of Cushion LCD Shim Black!

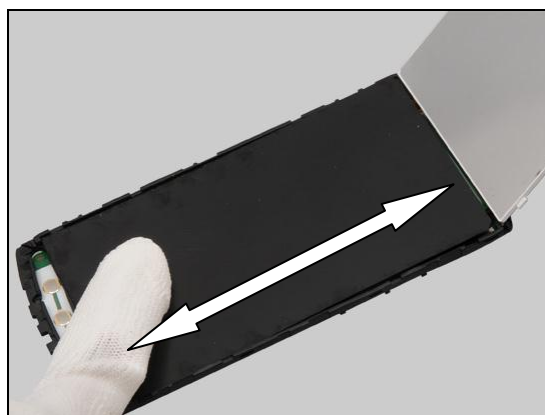


Reassembly

Put it on the LCD Frame.

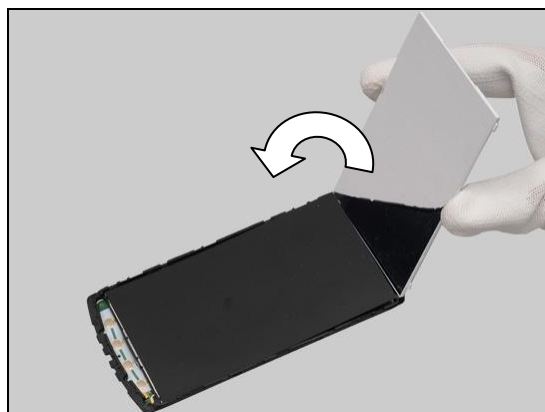


Press along the surface to secure the position and attachment.



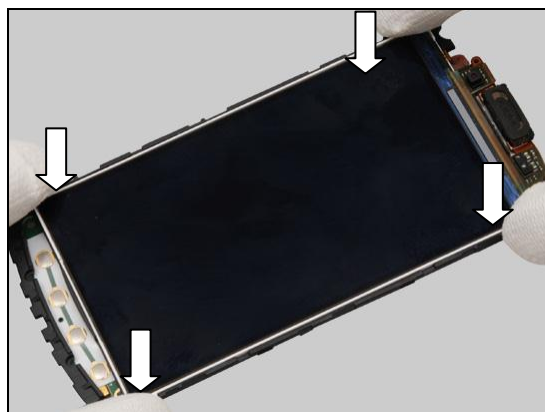
Turn over the Display carefully.

Do not touch the screen!



Press to secure its position.

Do not touch the screen!



Reassembly

5.4 Front Cover Assy

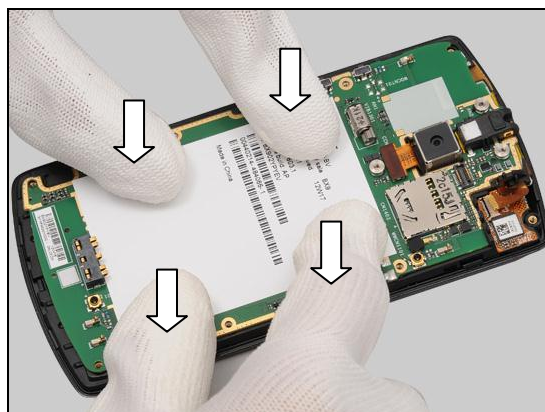
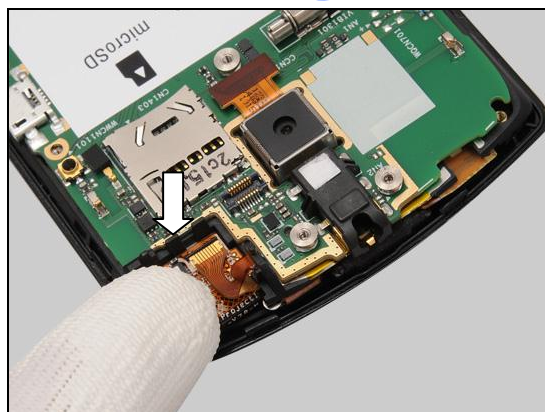
Prepare Front Cover Assy.

Insert the LCD Frame into the Front Cover Assy from the FPC at the right top corner and lay down the LCD Frame.

Make sure the FPC is above the LCD Frame!

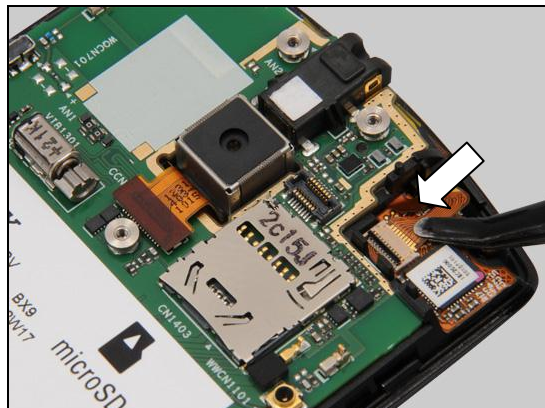
Press the FPC to secure its position and attachment.

Press to secure its position.

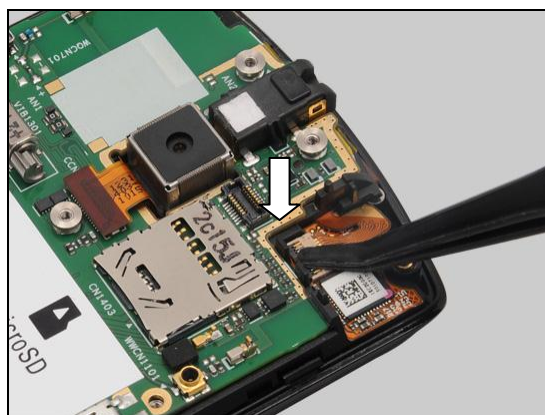


Reassembly

Connect the ZIF connector.

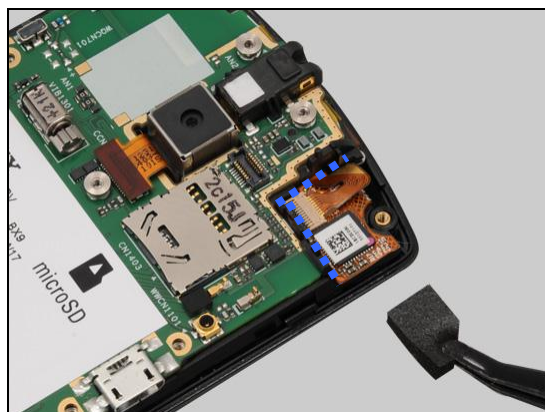


Lock the ZIF connector.

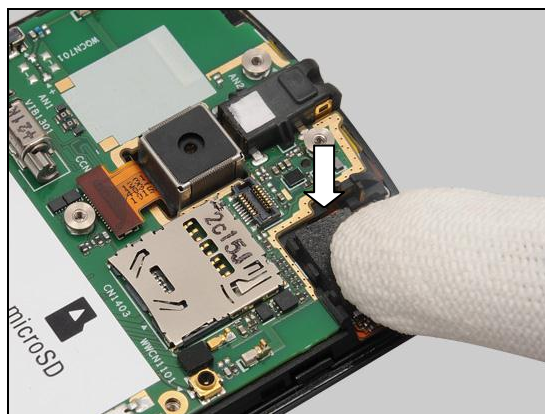


Place a new Gasket TP Connector along the edge of Main PBA as shown in the picture.

Note: The Gasket TP Connector should cover ZIF connector.



Press to secure its position.

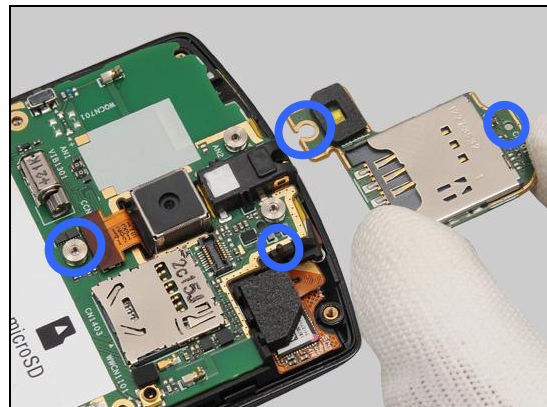


Reassembly

5.5 Sub SIM PBA Assy

Place the Sub SIM PBA Assy in the correct position.

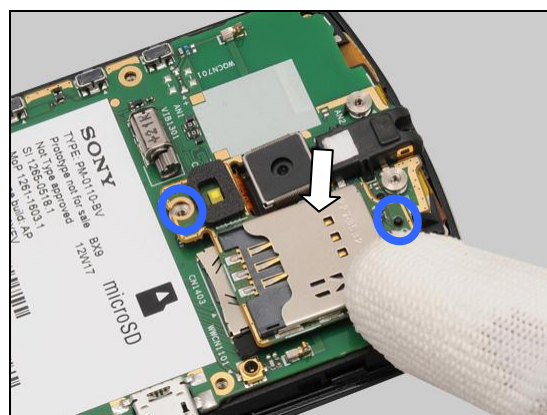
Note the guiding pole!



Press to connect the ZIF connector.

Make sure the two guiding holes are in correct position!

Note the Spring as shown in the picture!



5.6 Rear Cover Assembly

Prepare the Rear Cover Assembly.



Place the Rear Cover Assembly from the top side.



Reassembly

Press to secure the seven hooks.



Apply 9 ± 0.9 Ncm torque when tightening the Screw_M1.4X2.4 with Bits (JCIS No 0).



Apply 9 ± 0.9 Ncm torque when tightening the Screw_M1.4X2.8 with Bits (JCIS No 0).



Apply 9 ± 0.9 Ncm torque when tightening the Screw_M1.6X4.2 with Bits (T5).



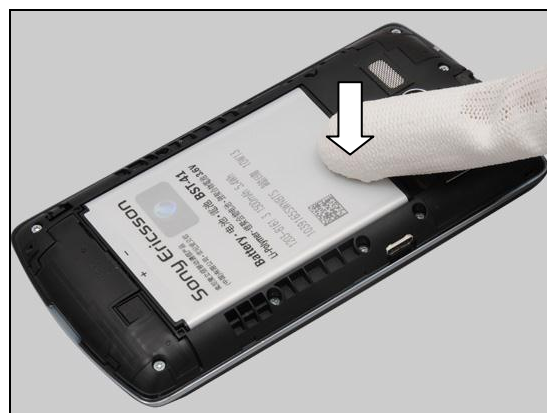
Reassembly

5.7 Battery

Place the Battery into the cavity.



Press to secure its position.



5.8 Battery Cover

Place the Battery Cover from the top.



Press to secure its position.



6 Revision History

| Rev. | Date | Changes / Comments |
|------|-------------|-------------------------------|
| 1 | 2012-Jun-25 | Initial release |
| 2 | 2012-Jul-27 | Update the chapter 4.31.1 |
| 3 | 2012-Sep-10 | Add new part "Kapton LCM FPC" |